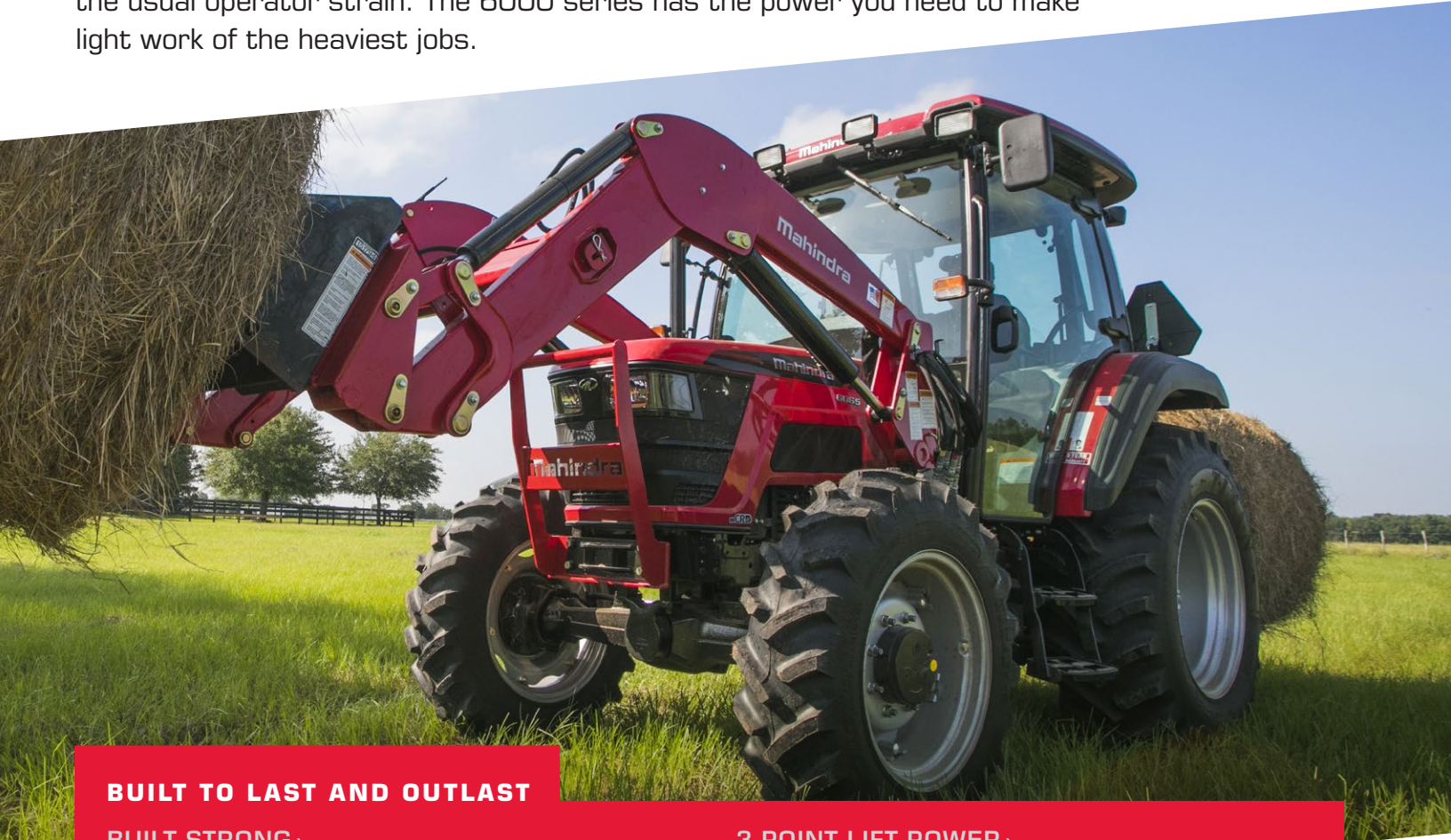


6000 SERIES

62-71 HORSEPOWER

DURABLE AND DEPENDABLE

If there's one word to describe Mahindra's new 6000 series of utility tractors, that word is durability. These tough and reliable machines are specifically engineered for top-tier performance and operator comfort in the toughest terrains. End a productive day working in rocky or hilly areas without feeling the usual operator strain. The 6000 series has the power you need to make light work of the heaviest jobs.



BUILT TO LAST AND OUTLAST

BUILT STRONG ›

With the largest tires, heaviest standard weight, and longest wheelbase in class, you'll hardly notice the rough terrain you're working in.

PTO ›

The economical 540E PTO setting allows for less fuel consumption and lower noise levels in light PTO work. Enjoy robust power for your implements while consuming less fuel.

TRANSMISSION ›

Standard 15x15 Power Shuttle allows for a wide speed range and excellent directional control for heavy-duty loader work.

3-POINT LIFT POWER ›

Stay strong and versatile. Best-in-class lift capacity allows for a wide range of implement attachment possibilities.

DELUXE CAB ›

A deluxe cab equipped with air-conditioning and heater, a spacious and comfortable interior, front window wiper, and more is available on either model.

LARGER FUEL TANK ›

Fed from an oversized 23.8-gallon fuel tank, you'll get a colossal amount of work done between refills.

Ideal Uses: Agriculture | Hay | Material Handling | Specialty / Hobby Farming
Grounds Maintenance / Municipal | Rural Lifestyle | Livestock | Dairy

KEY ADVANTAGES



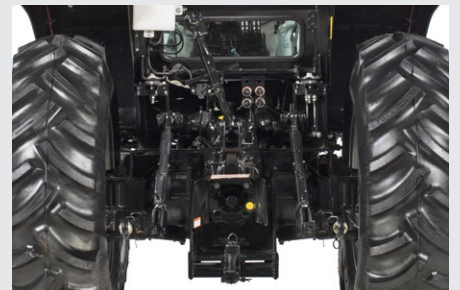
PST TRANSMISSION

Standard 15x15 Power Shuttle allows for a wide speed range and excellent directional control for heavy-duty loader work



BUILT STOUT FOR HEAVY-DUTY PERFORMANCE

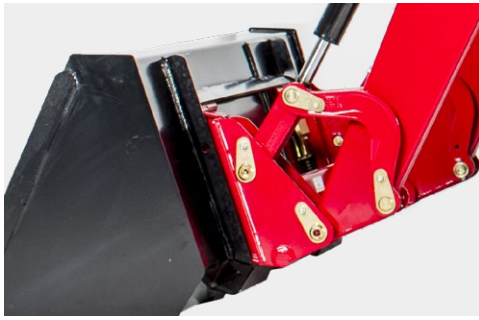
The 6000 series is armed with large tires for better traction, heavier standard weight to handle larger implements, and the longest wheelbase in its class, all combined for increased stability, versatility, and safety.



540E PTO

Standard economy settings allow for less fuel consumption and lower noise levels in light PTO work.

6000SERIES



EASY FRONT IMPLEMENT INSTALLATION

The 6000 series' advanced skid steer attachment system provides a faster, simpler approach to loader implement attachment and detachment.



DELUXE CAB

Each 6000 series model is available with a deluxe cab, fully equipped with air-conditioning, heater, a spacious interior, window wipers, flat deck ergonomic operator platform, and more.



EASY MAINTENANCE

The one-piece tilting hood allows for easy access to common service items. Simply unlock via a pulled lever. Servicing your tractor has never been simpler.

6000 SERIES ATTACHMENTS

TRACTOR	6065 2WD	6065 4WD	6065 4WD CAB	6075 4WD	6075 4WD CAB
LOADER MODEL		6075L	6075CL	6075L	6075CL
Standard Bucket Size [in]			78		
Maximum Lift Height [in]			133		
Dig Depth [in]			5.5		
Lift Capacity to Full Height at Pivot Pin [lbs]			3550		
Breakout Force [lbs]			5000		
Shipping Weight [lbs]			1880		
BACKHOE MODEL			65B		
Standard Bucket Size [in]			18		
Maximum Dig Depth [in]			112		
Dig Depth 2' Flat Bottom [in]			110		
Dig Force Bucket [lbs]			3895		
Dig Force Dipper [lbs]			2358		
Shipping Weight [lbs]			1100		



6000 SERIES SPECIFICATIONS

TRACTOR	6065 2WD	6065 4WD	6065 4WD CAB	6075 4WD	6075 4WD CAB
ENGINE					
Type	Four-stroke, Turbocharged, Intercooled, Direct Injection, Water Cooled Diesel Engine				
Engine HP (kW) @ RPM	62 (46.2) @ 2100		71 (52.9) @ 2100		
Displacement [in ³ (cc)]	161.7 (2650)				
Number of Cylinders	3				
Bore & Stroke [in]	Bore: 3.78, Stroke: 4.8				
Fuel Tank [gal (L)]	23.8 (90.0)				
DRIVE TRAIN					
Transmission	Full Synchro Mesh with Forward/Reverse Power Shuttle and Constant Mesh Range				
Number of Speeds	15F / 15R				
Clutch	Power Shuttle with Torsional Damper (wet)				
Brakes	Oil Immersed Brakes, Disc Diameter – 8.75 in. OD (222 mm), Ball and Ramp Type				
PTO					
Type	2-Speed Independent Single Lever PTO				
Rear PTO RPM	540/540E				
PTO HP (kW)	53.5 (39.9)		61 (45.5)		
HYDRAULICS					
Type	Open Center with Position and Draft Control, Telescoping Stabilizers and Flex Links				
Implement Pump Output [gpm (L/min)]	11.1 (42.0)				
Maximum Total Flow [gpm (L/min)]	15.7 (59.4)				
3-Point Hitch	CAT I & II				
Lift Capacity [lb (kg)]	4840 (2195)				
ELECTRICAL					
Battery	12 V, 925 CCA				
Alternator	12 V, 55 A (External Fan)		12 V, 140 A (Internal Fan)	12 V, 55 A (External Fan)	12 V, 140 A (Internal Fan)
DIMENSIONS					
Overall Length [in (mm)]	141.7 (3599)		146.9 (3731)		
Overall Width [in (mm)]	73.2 (1859.2)		82.68 (2100)	78.74 (1999)	82.68 (2100)
Overall Height [in (mm)]	104 (2641)		115 (2921)	105 (2667)	115 (2921)
Wheelbase [in (mm)]	84.7 (2151.3)		87.4 (2219)		
Minimum Ground Clearance [in (mm)]	12.2 (309)		14.1 (358)		
Turning Radius [ft (m)]	11.5 (3.5)		12.4 (3.7)		
Weight [lb (kg)]	6095 (2764)	6746 (3059)	7495 (3399)	6746 (3059)	7495 (3399)
WHEELS & TIRES					
AG [Front/Rear]	9.5L x 15 / 16.9 x 28		11.2 x 24 / 16.9 x 30		
IND [Front/Rear]	N/A		43 x 16-20 / 18.4-28		