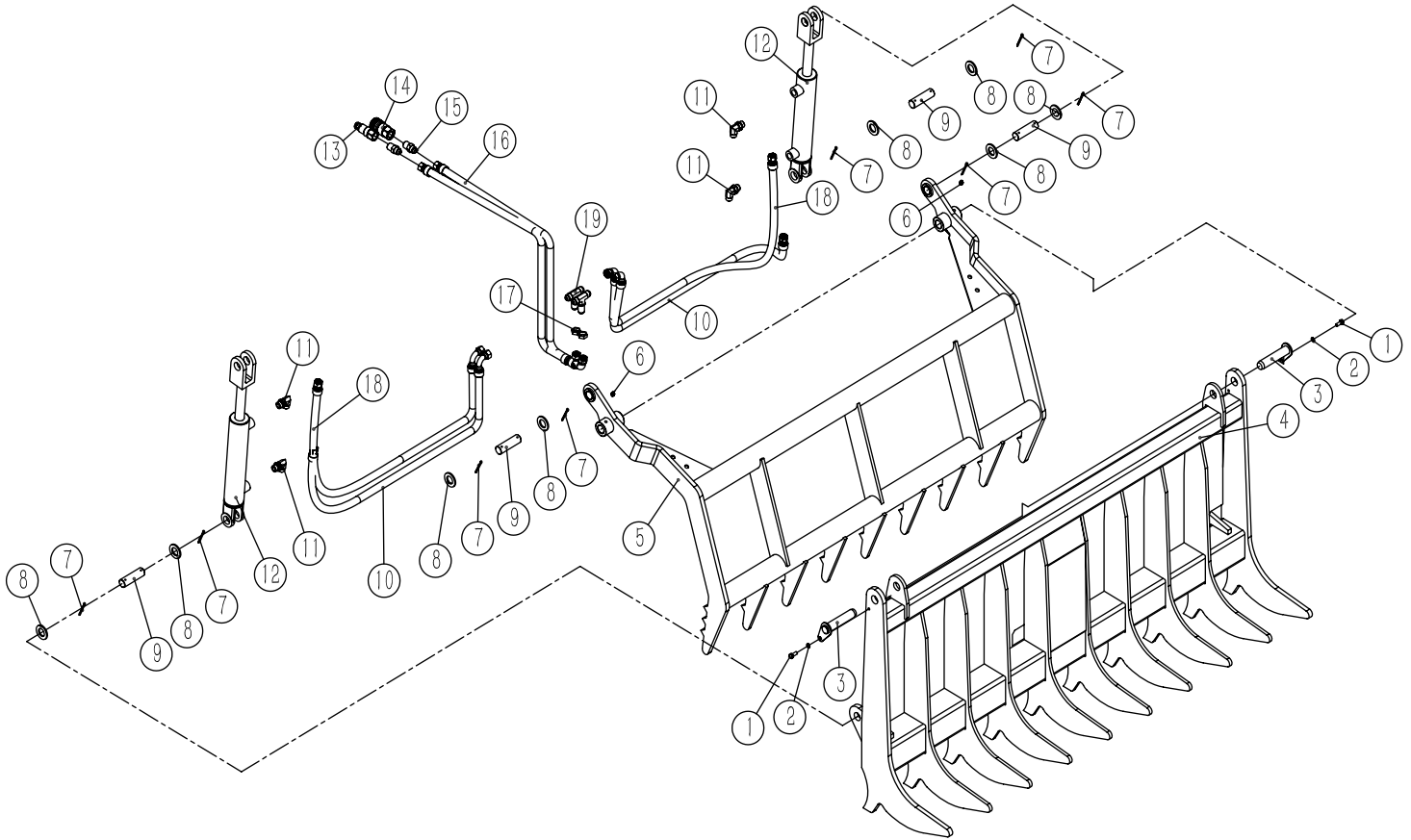


OPERATIONS & PARTS MANUAL

- FOR MODELS:**
- BE-SSGBC60
 - BE-SSGBC75

PURCHASE DATE	MODEL NO.	SERIAL NUMBER
DEALER		

EXPLODED VIEW & PARTS LIST



REF	PART NO	DESCRIPTION	QTY
1	104.102B.001	Bolt M8 × 20	2
2	104.102B.002	Spring washer 8	2
3	104.102B.003	Pin shaft weldment	2
4	104.102B.004	Lower splint weldment	1
5	104.102B.005	Upper splint weldment	1
6	104.102B.006	Oil cup M8x1	2
7	104.102B.007	Split pin 4 × 45	8
8	104.102B.008	Flat washer 24	8
9	104.102B.009	Pin shaft 25	4
10	104.102B.010	Oil Hose 01	2
11	104.102B.011	Elbow 3 / 4-16	4
12	104.102B.012	Cylinder	2
13	104.102B.013	Plane quick change connector npt1 / 2 (male connector)	1
14	104.102B.014	Plane quick change connector npt1 / 2 (male connector)	1
15	104.102B.015	Connector 3 / 4-16 to npt1 / 2	2
16	104.102B.016	Import and export tubing	2
17	104.102B.017	Nut 8Wlnms	2
18	104.102B.018	Oil Hose 02	2
19	104.102B.019	Tee 8WJTX	2



BRABEREQ.COM
WGSALES@BRABEREQ.COM

PHONE: 604-850-7770
FAX: 604-850-7774
TOLL FREE PHONE: 1-877-588-3311
TOLL FREE FAX: 1-800-665-7334