

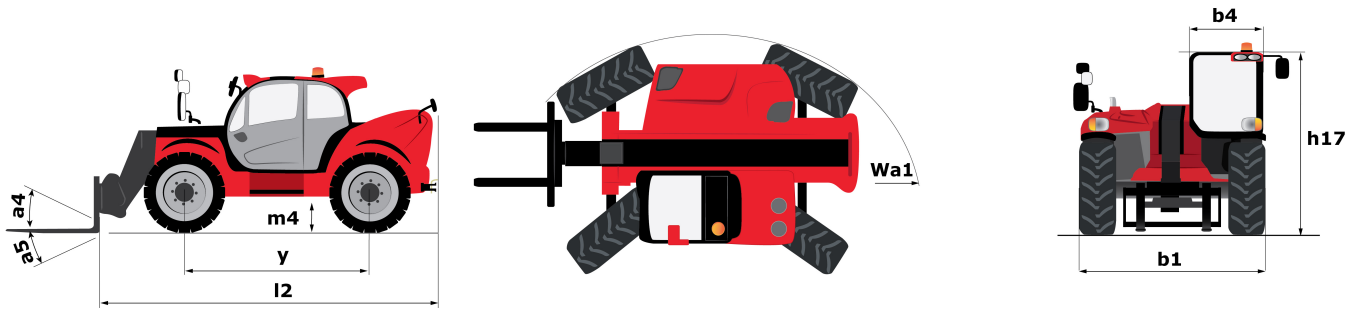
Technical sheet :

MTA 10044 S3

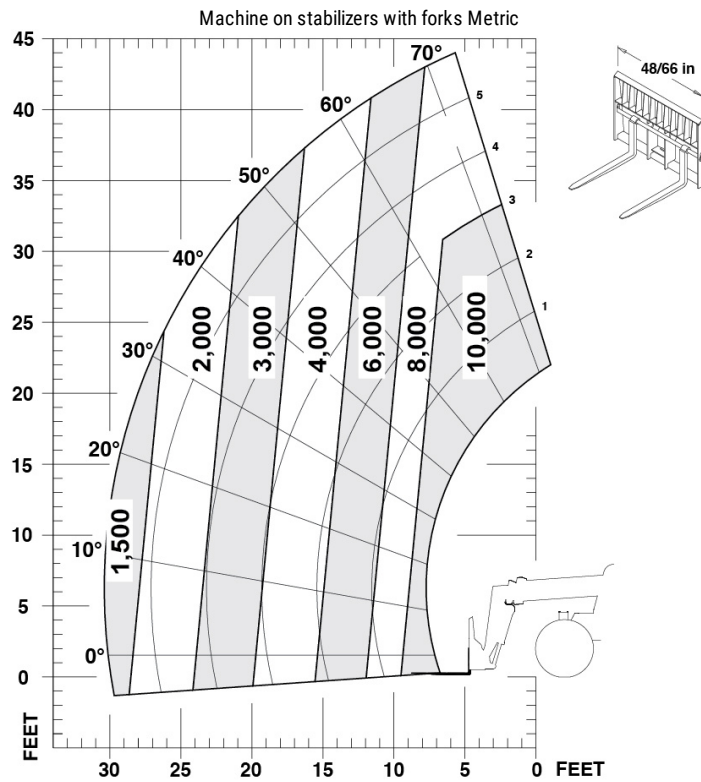


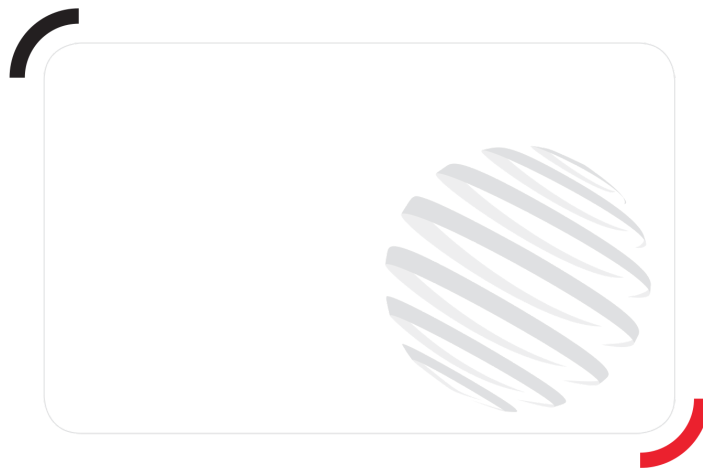
Capacities		Metric
Max. capacity		4536 kg
Max. lifting height		13.40 m
Max. Reach		9.30 m
Weight and dimensions		
Overall length to carriage	l11	6.10 m
Overall length (with forks)	l1	6.10 m
Overall width	b1	2.53 m
Overall height	h17	2.41 m
Wheelbase	y	3.15 m
Ground clearance	m4	457 mm
Overall cab width	b4	838 mm
Tilt-up angle	a4	12 °
Tilt-down angle	a5	112 °
External turning radius	Wa3	4.24 m
Unladen weight (with forks)		11476 kg
Standard tyres		14 x 24
Frame levelling longitudinal +/-		10 °
Performances		
Lifting		15 s
Lowering		10 s
Extension		15 s
Retraction		12 s
Crowd		6 s
Dump		3 s
Engine		
Engine brand		Cummins
Engine nom		Tier IV Final
Engine model		QSF 3.8
Number of cylinders / Capacity of cylinders		4 - 3.80 cm ³
Power (kW)		89 kW
Max. torque		488 Nm
Transmission		
Transmission type		Torque Converter with powershift
Number of gears (forward / reverse)		4 / 3
Parking brake		SAHR
Service brake		Wet disc brakes
Axle Manufacturer		Dana
Hydraulics		
Hydraulic pump type		Gear pump
Hydraulic flow / Pressure		157 l/min / 207 Bar
Tank capacities		
Engine oil		14.70 l
Hydraulic oil		170 l
Fuel tank		178 l
DEF tank capacity		19 l
Miscellaneous		
Steering wheels (front / rear)		2 / 2
Drive wheels (front / rear)		2 / 2
Safety cab homologation		ROPS/FOPS
Controls		Single Joystick FNR

Dimensional drawing



Load chart





Siège Social

430 rue de l'Aubinière - 44150 Ancenis Cedex - France

Tel: +33(0)2 40 09 10 11 - Fax: +33 (0)2 40 09 10 97

www.manitou.com



This brochure describes versions and configuration options for Manitou products which may be fitted with different equipment. The equipment described in this brochure may be standard, optional or not available depending on version. Manitou reserves the right to change the specifications shown and described at any time and without prior warning. The manufacturer is not liable for the specifications given. For more information, contact your Manitou dealer. Non-contractual document. Product descriptions may differ from actual products. List of specifications is not comprehensive. The logos and visual identity of the company are the property of Manitou and may not be used without authorisation. All rights reserved. The photos and diagrams contained in this brochure are provided for information only.

MANITOU BF SA - Limited company with board of directors - Share capital: 39,668,399 euros - 857 802 508 RCS Nantes