

Instruction	FK440
Product	4480XD Bale Carrier
Subject	Quick Start Guide
Date	June 21, 2021

Summary	<p>Quick start guide for TMs, Dealers, and End Users upon initial setup of the Farm King 4480XD Bale Carrier onto tractor.</p> <p>4480XDs are cycled at least three times with a hydraulic test unit (not a tractor) for each function while at the factory. This is to get air out of the hydraulic system and verify all functions operate.</p> <p>The display is then calibrated, cycled in auto-mode three times, and packaged for that particular unit upon shipping.</p> <p>It is advised that the dealer perform the pre-delivery inspections as well as assisting end user with calibration setup onto tractor.</p>
----------------	---

SAFETY

WARNING

LEAKING FLUID HAZARD



Leaking fluids under pressure can enter the skin and cause serious injury or death. Immediate medical attention is required.

Wear hand and eye protection. Use cardboard to check for leaks.

Do not operate with hydraulic leaks.

WARNING

AVOID BURNS

Hydraulic fluid, tubes, fittings and quick couplers can get hot when running equipment. Be careful when connecting and disconnecting quick couplers.

WARNING

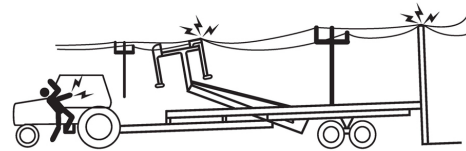
HIGH PRESSURE FLUID HAZARD

To prevent serious injury or death from high pressure fluid:

- Relieve pressure on system before repairing or adjusting.
- Keep all components in good repair.

DANGER

ELECTROCUTION HAZARD



To prevent serious injury or death from electrocution, stay at least 50 ft. (15 m) away from overhead power line when raising tipping frame or lift arm.

WARNING

MOVING PARTS HAZARD

Keep shields and all guards in place.

Keep away from lift arm and tipping frame when engine is running. Keep others away.

Keep fingers and hands out of pinch points when adjusting or servicing equipment.

INITIAL SETUP

STEP 1

Locate the serial number (Item 1) on inside left hitch weldment. Record in owner's manual and this quick start guide [Figure 1].

Model Number: _____

Serial Number: _____

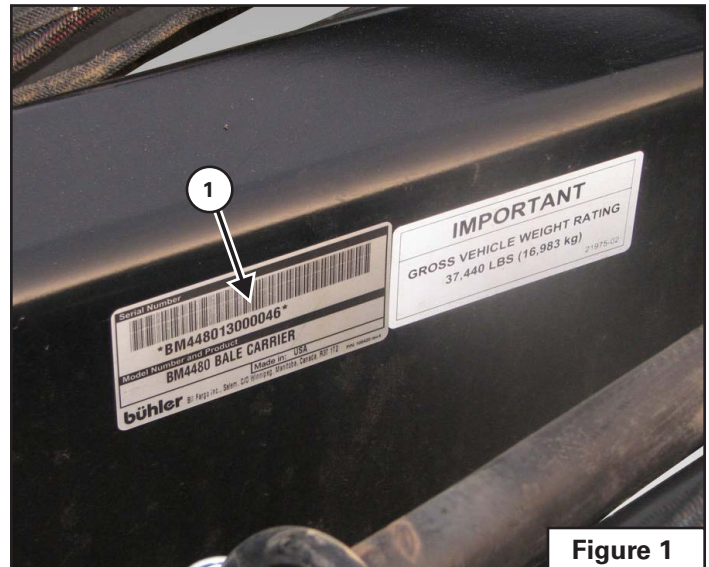


Figure 1

STEP 2

Have the owner's manual available as needed. The owner's manual and other documents can be found in the canister (Item 1) located on the front left side of the carrier [Figure 2].

Manuals can also be found online at:

- www.farm-king.com/pages/product_ht_bale-carrier-square.php/

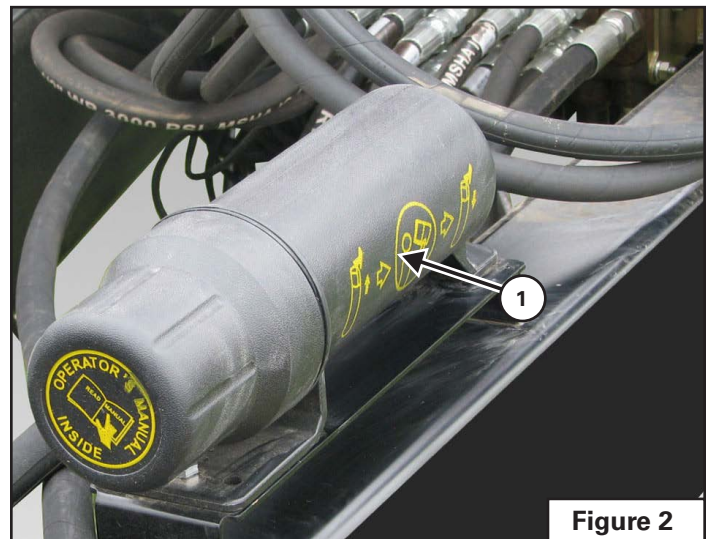


Figure 2

STEP 3

Register unit and perform pre-delivery inspection. Registration is preferred to be completed online at:

- www.farmkingdealers.com/

A physical form is also included on **page 11**.

STEP 4

Properly set the ball valve (Item 1) depending on tractor hydraulic system (tractor used for pre-delivery inspection or for end user) [Figure 3].

Tractor hydraulic connections are shown (Item 2, 3) [Figure 3].

Use the tractor owner’s manual to find the year, make, model, and hydraulic system:

Year: _____

Make: _____

Model: _____

Hydraulic System: _____

Use common websites on tractor data to look up hydraulic system information if it is not known from tractor owner’s manual.

Use a 9/16” wrench to properly set ball valve as shown [Figure 4]:

- Open center (Item 1)
- Closed center (Item 2)

If the tractor has SCV controls or hydraulic flow rate controls, set the flow rate as low as possible without negatively affecting the performance of the bale carrier (typically 18-20 gpm).

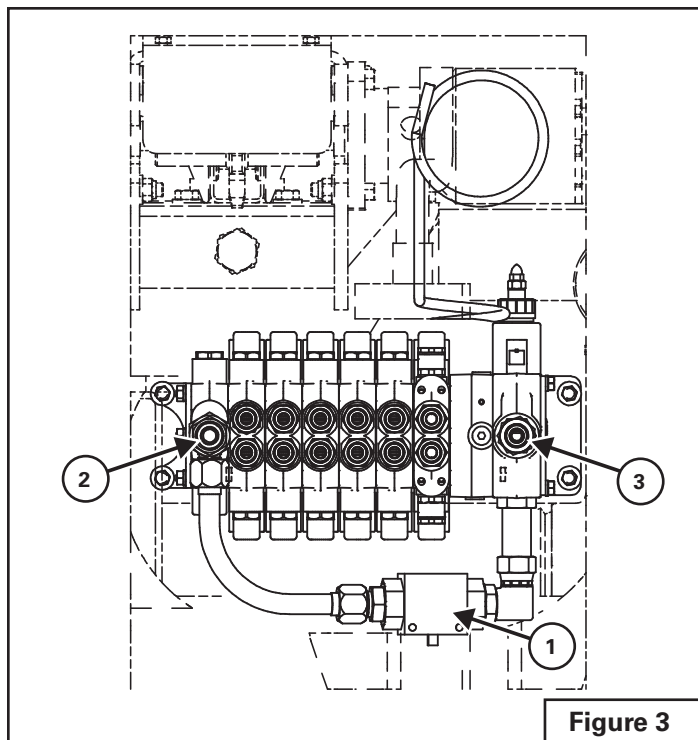


Figure 3

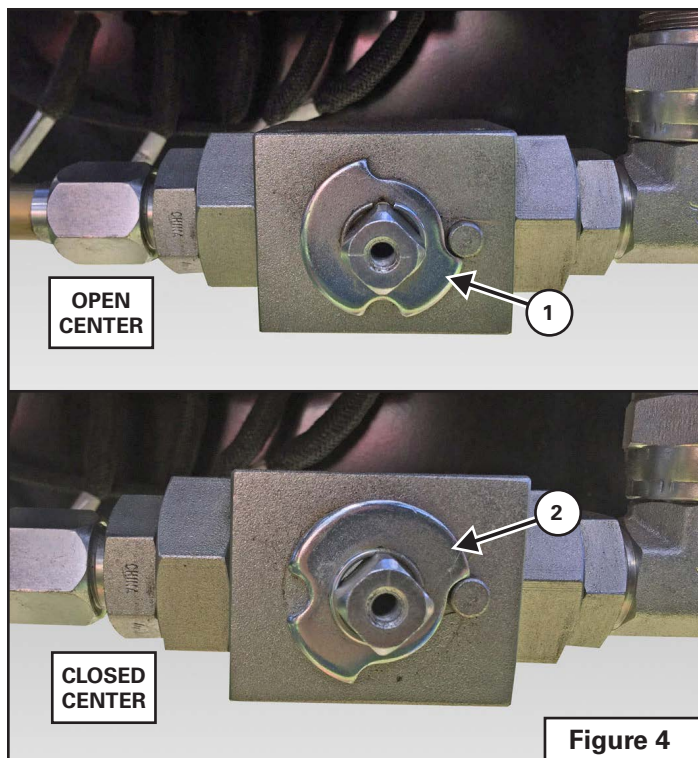
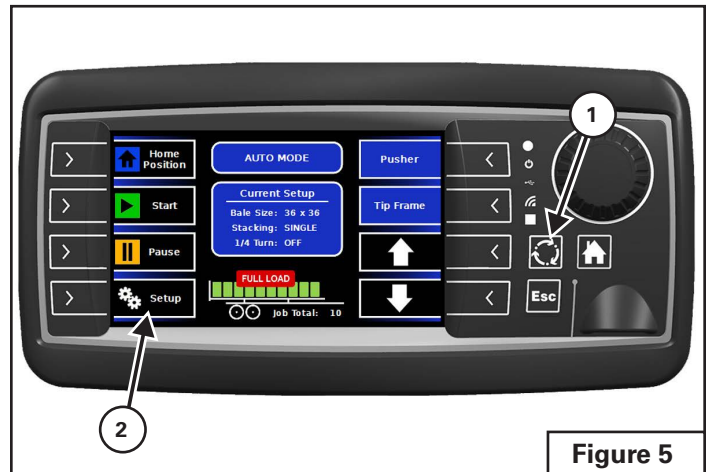


Figure 4

CALIBRATION

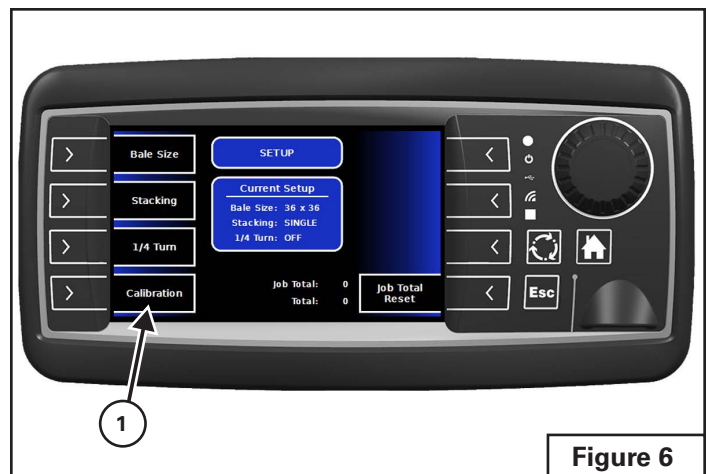
STEP 5

Select NEXT (Item 1) to cycle to AUTO MODE.
 Select SETUP (Item 2) [Figure 5].



STEP 6

Select CALIBRATION (Item 1) [Figure 6].

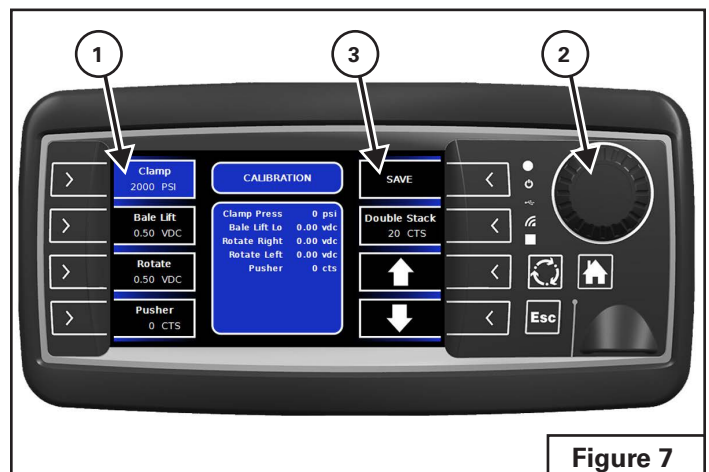


STEP 7

Begin calibration process for all functions:

A. CLAMP PRESSURE

Select CLAMP (Item 1). Turn encoder knob (Item 2) until clamp pressure is approximately 2000 PSI. Select SAVE (Item 3) [Figure 7].



B. BALE LIFT POSITION



Make sure the cylinder lock is removed from the bale lift hydraulic cylinder.

Select BALE LIFT (Item 1). Hold the down arrow (Item 2) to move the bale lift to the fully lowered position. Select SAVE (Item 3) [Figure 8].

Note: Down limit should be greater than 0.25 VDC. The down limit should be no greater than approximately 1.00 VDC, with the lift arm in lowest position. Down limit target is at or near 0.50 VDC.

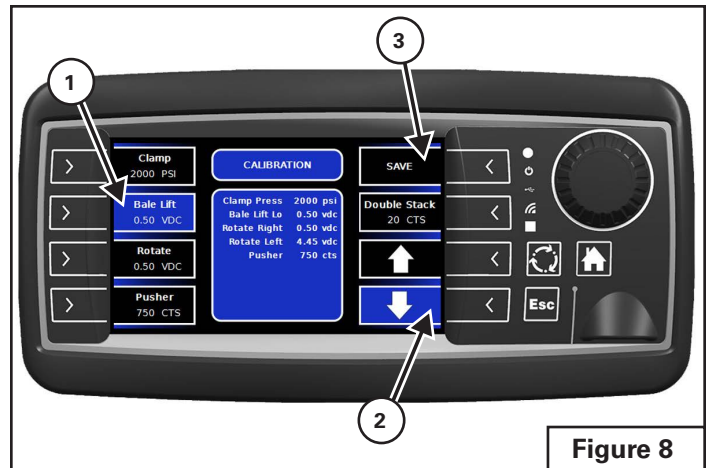


Figure 8

C. ROTATE ARM POSITION

Select ROTATE (Item 1). Hold the down arrow (Item 2) to fully retract (right) the rotate arm. Select SAVE (Item 3) [Figure 9].

Hold the up arrow (Item 4) to fully extend (left) the rotate arm. Select SAVE (Item 3) [Figure 9].

Note: Left limit should be greater than 3.50 VDC and less than 5.00 VDC.

Note: Right limit should be greater than 0.25 VDC and less than 2.50 VDC.

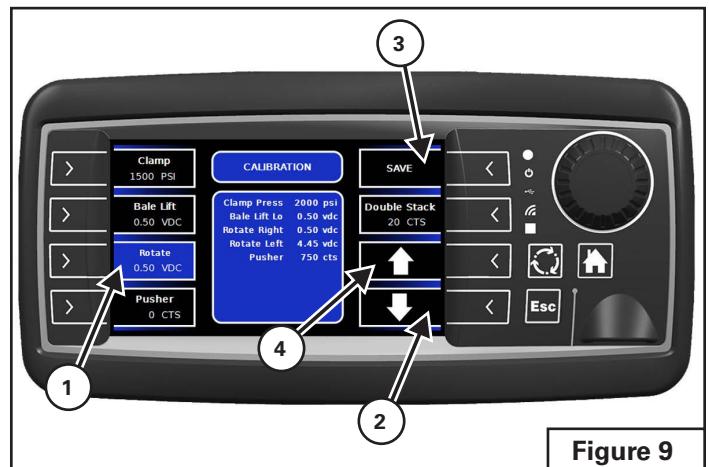


Figure 9

D. PUSHER POSITION



Do not run pusher into the hydraulic motor cover.

Select PUSHER (Item 1). Hold the down arrow (Item 2) until the pusher is approximately 12" (304 mm) in front of the tip frame. Select SAVE (Item 3) [Figure 10].

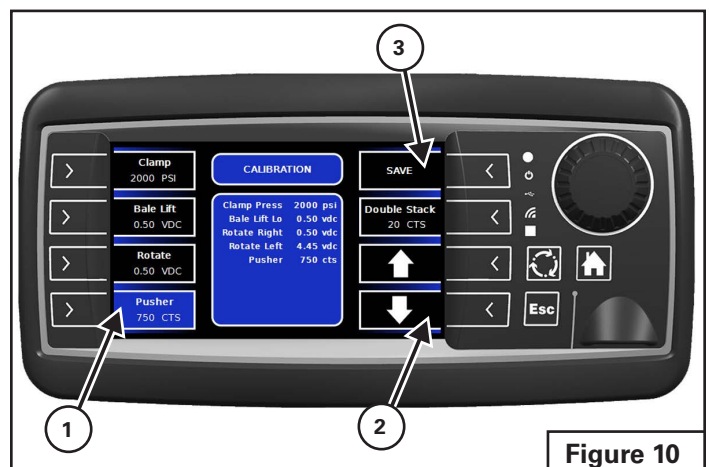


Figure 10

E. DOUBLE STACK PUSHER POSITION

Select DOUBLE STACK (Item 1) [Figure 11].

Note: DOUBLE STACK is used to adjust how far the first bale is pushed back when double stacking.

Turn encoder knob (Item 2) to increase or decrease CTS number. Increase the CTS number to increase the distance the pusher moves the first bale. Decrease the CTS number to decrease the distance. Select SAVE (Item 3) [Figure 11].

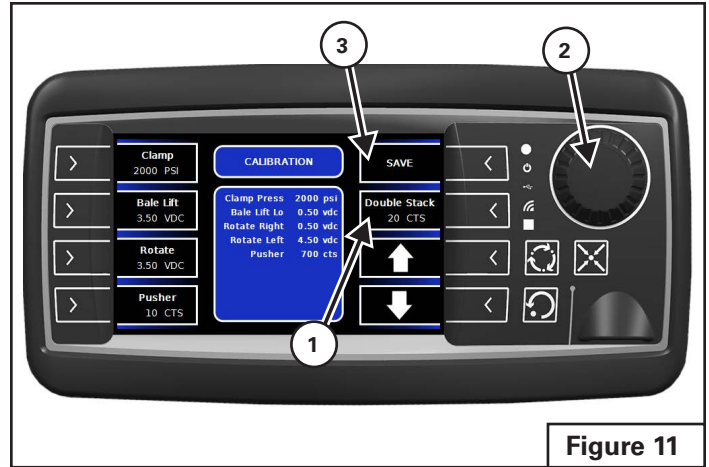


Figure 11

CONFIGURATION

STEP 8

Select NEXT (Item 1) to cycle back to AUTO MODE. Select SETUP (Item 2) [Figure 12].

Note: Double stacking 36" x 48" bales with 1/4 turn OFF.

Note: Single stacking only on 36" x 48" bales with 1/4 turn ON.

Note: Double stacking 36" x 36" bales with 1/4 turn OFF.

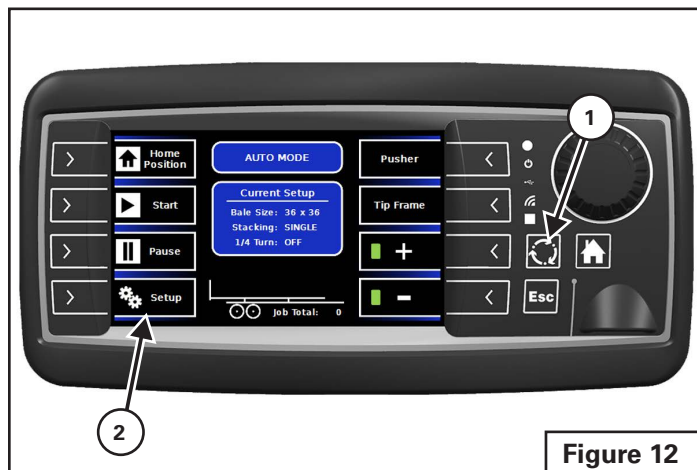


Figure 12

STEP 9

Begin configuration process for bale size, stacking, and 1/4 turn:

A. BALE SIZE

Select BALE SIZE (Item 1) to select the desired bale size. The current size is displayed on the screen (Item 2) [Figure 13].

Bale Size Options:

- 36 in. x 36 in. (914 mm x 914 mm)
- 36 in. x 48 in. (914 mm x 1219 mm)
- 48 in. x 48 in. (1219 mm x 1219 mm)

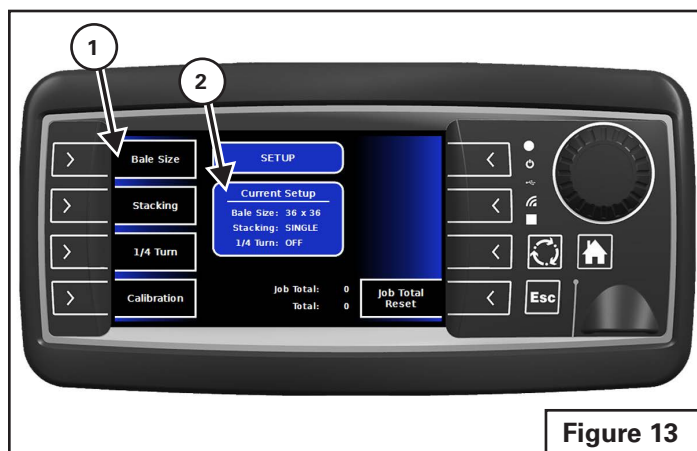


Figure 13

B. STACKING

Select Stacking (Item 1) to select single or double stacking [Figure 14].

Note: Single stacking only on 48 in. x 48 in. (1219 mm x 1219 mm) bales.

C. 1/4TURN

Select 1/4TURN (Item 2) to select 1/4 turn ON or OFF [Figure 14].

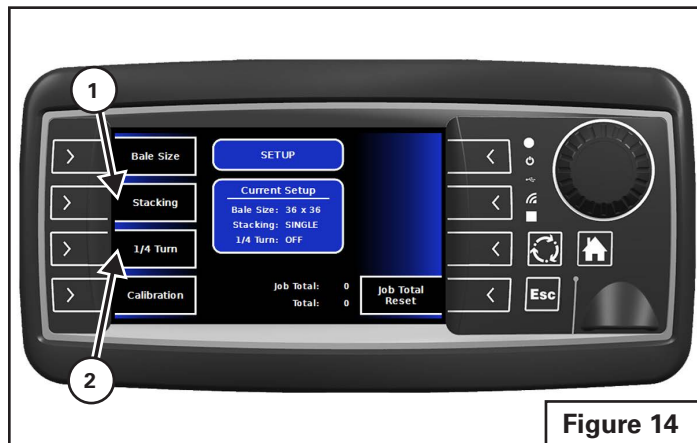


Figure 14

OPERATION

STEP 10

Return to AUTO MODE once bale carrier is calibrated to the tractor with bale size, double-stack, and 1/4 turn configured.

Select NEXT (Item 1) to cycle to AUTO MODE [Figure 15].

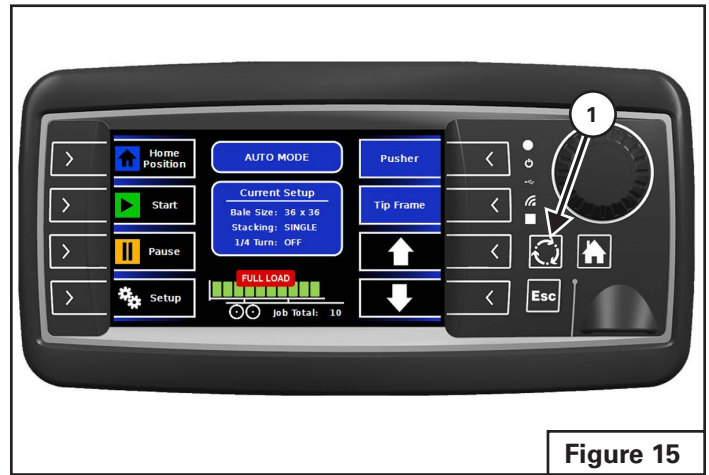


Figure 15

STEP 11

The AUTO MODE function can be operated with the display or remote key pad (Item 1) [Figure 16].

Use the buttons on the remote key pad or display to operate the bale carrier:

A. HOME POSITION

Hold the HOME button (Item 1) until the icon turns Blue. This indicates that all functions are in the HOME position [Figure 17].

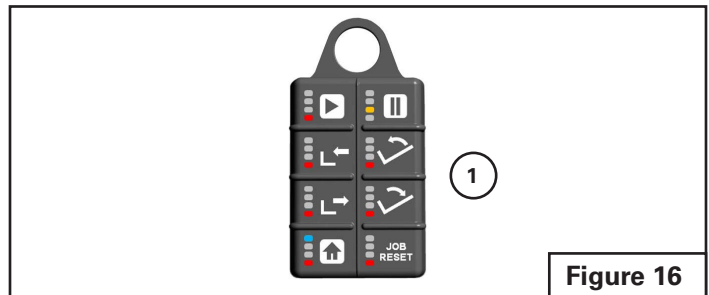


Figure 16

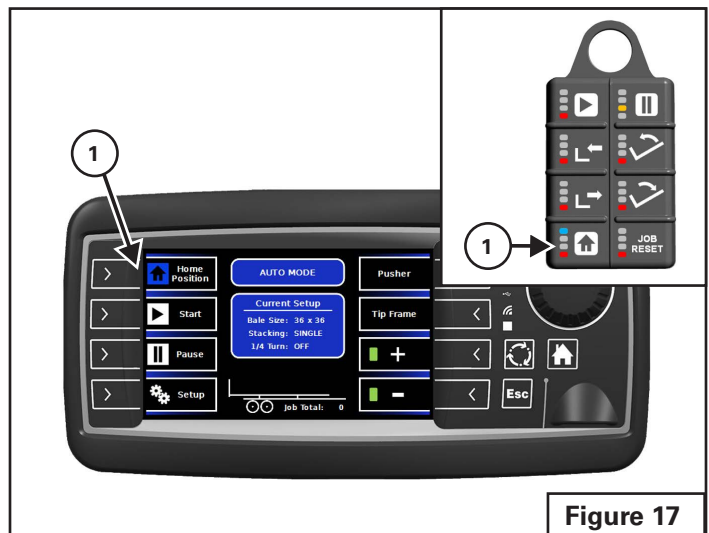


Figure 17

B. START BALE LOADING

Note: Ensure all functions are in the HOME position before loading.

Hold the START button (Item 1) and the loading sequence will begin by clamping the bale [Figure 18].

Continue to hold the START button until the START button blinks GREEN and the bale has been clamped.

Release the START button.

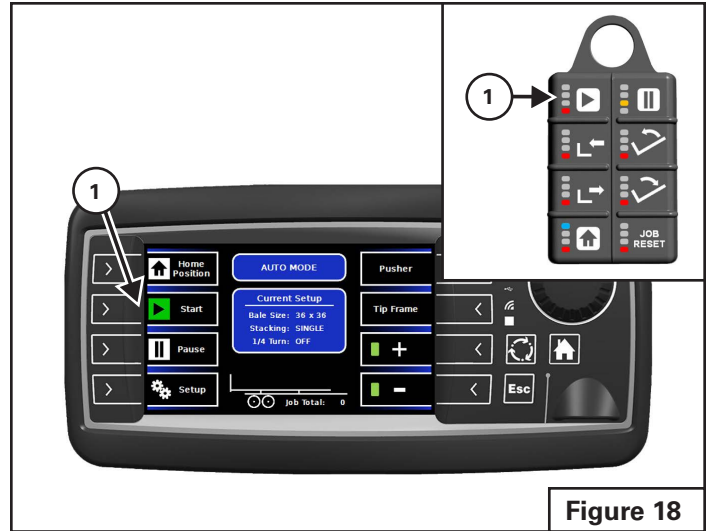


Figure 18

WARNING

AVOID LIFT ARM DAMAGE

When operating along tree-lines, always monitor the lift arm operation.

Verify that the lift arm and bale will not make contact with branches or overhead obstructions as the bale is raised and placed on the carrier deck.

C. STOP LOADING

Select PAUSE (Item 1) to stop the loading sequence at any time [Figure 19].

The loading sequence will stop and the PAUSE icon will blink AMBER in color. The START icon will be WHITE in color.

Note: When the sequence is paused, only the bale lift raise / lower can be operated.

Select PAUSE a second time to cancel the loading sequence.

Select START while the loading sequence is paused to start the sequence where it left off. The START icon will be GREEN in color. Allow bale carrier to run through the complete cycle.

Select and hold HOME to return all functions to the HOME position. The loading sequence will not be able to continue until all functions are back in the Home position.

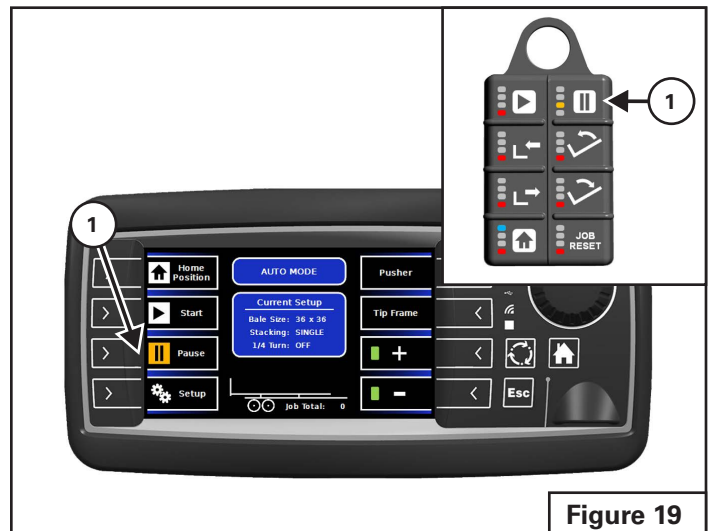


Figure 19

Warranty Registration Form

This form must be filled out by the dealer and signed by both the dealer and the customer at the time of delivery. Forms may be faxed to 204-654-2503 ATTN: Farm King Service/Warranty Administrator. Forms may be emailed to warranty@buhlerindustries.com or submitted online at farmkingdealers.com.

Customer Name:	
Customer Address:	
City:	Prov / State:
Postal / Zip Code:	Phone:

Dealer Name:	
Dealer Address:	
City:	Prov / State:
Postal / Zip Code:	Phone:

Equipment Model:	Serial Number:	Delivery Date:
------------------	----------------	----------------

I have thoroughly instructed the buyer on the above described equipment which included the Operator and Parts Manual content, equipment care, adjustments, safe operation and applicable warranty policy.

Dealer Inspection Report:

- Bearing Seals
- Lubricate Machine
- Wheel Nut Torque
- Fasteners Tight
- Pusher Sprocket And Chain Tension
- Hydraulic Hoses
- Electrical Harnesses
- Tire Pressure

Safety:

- All Lights And Reflectors Installed
- All Lights And Reflectors Cleaned And Working
- Safety Chain On Hitch
- All Decals Installed
- Guards And Shields Installed And Secure
- Review Operating And Safety Instructions
- General Adjustment And Set-up Procedures
- Transportation Requirements And Regulations

Date:	Dealer Rep. Signature:
-------	------------------------

The above equipment and Operator And Parts Manual have been received by me and I have been thoroughly instructed as to care, adjustments, safe operation and applicable warranty policy.

Date:	Customer / Owner Signature:
-------	-----------------------------

Remove this Warranty Registration Form from the Operator And Parts Manual. Make two copies of the form. Send original Warranty Registration Form to Farm King. Give one copy to the customer and the dealer will keep one copy.