

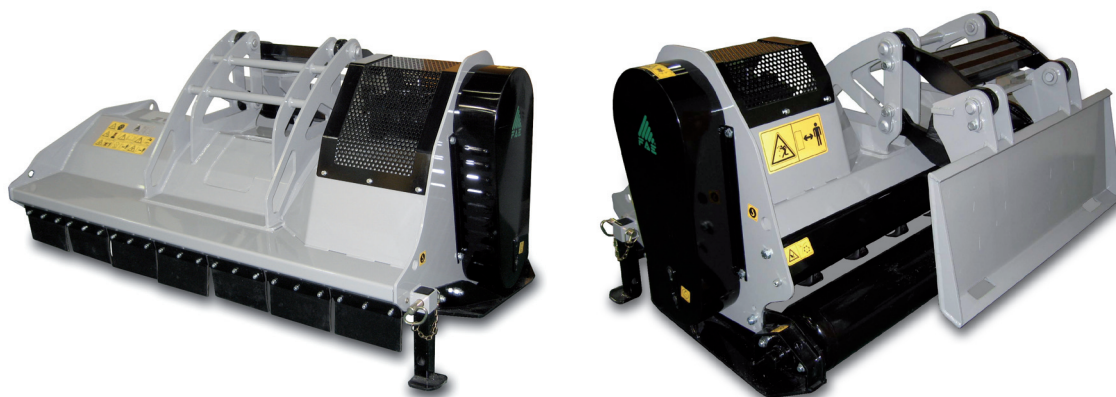


## PMM/SSL

Brush mulcher for skid steer loaders between 60 and 130 HP.

**Standard equipment:** hydraulic gear type motor (from 32 to 65 cc) with double relief valve with anticavitation and brake function and variable displacement for high and low flow usage, skid steer loader type quick attachment plate with self levelling device, self cleaning rear roller with integrated skids, anti-projection flaps, adjustable rear hood, Hardox steel counter blades, hydraulic hoses, heavy duty hammers or “Y” flails.

**Options:** oversized roller supports for heavy duty application.



## PMM/SSL

Model	Power HP	Requirements		Working width inches	Overall width inches	Weight lbs	Grinding diameter inches (max)	Teeth q.ty	
	Min - Max	Flow gal/min Min - Max	Pressure PSI Min - Max					hammers PMM	flails Y
PMM/SSL 150	60 - 130	16 - 32	3000 - 3600	61	69	1742	3	18	18
PMM/SSL 175	65 - 130	16 - 32	3000 - 3600	70	79	1874	3	22	22
PMM/SSL 200	70 - 130	16 - 32	3000 - 3600	79	86	2006	3	24	24

Data refers to the machine without options.



Hammer PMM



Flail “Y”