



FRONT-END LOADERS

95 Series | Midmount 2000 Series | Attachments





Allied by Farm King front-end loaders are backed by years of extensive research. Factory testing simulates specific operations to evaluate durability; days of continuous cycling in raising, twisting and dropping loads using a programmed hydraulic power unit represents years of extreme use. With one of the largest mounting kit application lists in the industry, there is an Allied front-end loader available for nearly every tractor, large or small, new or old. Custom colors are available to match all tractor brands which adds resale value and visual appeal.

PRODUCT OVERVIEW

- › Designed for new and older model tractors
- › Large mounting kit application list
- › For tractors ranging from 15 to 300 hp

FEATURES

- › True Self-Leveling
- › Hydra Fast

OPTIONS

- › Direct mounted or cable remote joystick
- › Cushion ride

Industry-Leading Guarantee

All Allied Front-End Loaders are guaranteed to be free of defects in material and workmanship for one full year from time of purchase, and a two-year parts warranty is standard.

Mounting Kits

Allied mounting kits are designed to minimize stress on your tractor frame. The majority of mounting kits include support bars to the rear axle and full-length left- and right-side rails that are connected by underslung cross members. Torsion tubes join the arms of the front-end loader to provide extra strength. The pin and bushing assembly include a grease cavity for continued lubrication during use and all pivot points feature replaceable bushings.

Features



True Self-Leveling (TSL)

These loaders pick up where others drop off. The TSL system eliminates the variable "waving" action of leveling during the lift and lower cycle, so common in some other brands. During the raise/lower cycle, the bucket stays perfectly level or at the desired position. Not just approximately - precisely. The TSL system provides full dump at ground, and additional roll back as the loader raises.



Quick Disconnect

1. Remove the parking stands from their storage compartment on the loader arms.
2. Remove lock pin on each side of Midmount models. No tools required.
3. Back away tractor and disconnect the hydraulics. Reverse the procedure for re-mounting the loader.
4. Loosen bolt on each side of 95 Series.



Joystick

A direct mounted or cable remote joystick is available. Packages are complete with color-coded dust caps, plugs and quick couplers. Choose from a 2- or 3-spool valve package. Both valve packages provide the opportunity to add a third function such as a grapple. The 3-spool valve package provides the opportunity to add a function, such as a hay grapple for all close center tractors.



Cushion Ride

Driving across rough ground with a loaded bucket or suddenly dropping a heavy load can be hard on the tractor, loader and operator. Cushion Ride effectively feathers these shocks and bumps, similar to the shock absorbers in a vehicle. This provides smoother loader operation and adds longevity to the loader and loader components.



Hydraulic Cylinder

Most Allied hydraulic cylinders have a poly pac seal system for superior sealing and easy replacement. Large diameter cylinder rods and thick chrome plating complement the longevity of the cylinder life. Standard cylinder locks on both sides keep the loader locked in position while servicing the tractor. Larger diameter lift and bucket cylinders provide a higher lift capacity and stronger rollback power.



Hydra Fast

One lever couples or disengages all hydraulic lines, for two, four or six outlets, for a clean, quick and easy connection even under pressure. This takes the guess work out of incorrect line connection, ensuring your hydraulic lines are hooked up properly every time.



95 Series Earlier model tractors continue to use our time-proven 95 Series loader, for tractors with 15 to 190 hp. The conventional four-point mounting system includes two rear main “boots” and two front hooks that provide a positive lock to hold the loader tight and rigid to the loader mount.

Skid Steer Quick Attach

A skid steer quick attach is available on 95 Series models up to 595, making these front-end loaders a multi-use tool carrier that are truly adaptable to take on any task. Mechanical true self-leveling is available on models 595 to 895.

PRODUCT OVERVIEW

- › Designed for older model tractors
- › Large mounting kit application list
- › For tractors ranging from 15 to 190 hp

FEATURES

- › True Self-Leveling, models 595 and larger
- › Quick attach standard on 495 and larger

OPTIONS

- › Quick attach optional on 395 and smaller
- › Skid steer quick attach

AVAILABLE COLORS*

- Red
- Black
- Blue
- Green
- Orange

*Black is the standard color.

Mounting Kits

Most of our 95 Series mounting kits have rear axle bars that connect our mounting kits to the rear axle of the tractor providing increased strength and support. All of this minimizes stress on the loader, loader components and tractor frame to enhance longevity.

Lift Capacity

Most 95 Series loaders are available with larger lift and bucket cylinders for greater lift capacity. The bucket quick attach is a standard feature on the 95 Series (model 495 and larger) and is optional on smaller models.

Model	95	195	295	395	495	495 S	595	595 S	695	795	795 S	895	895 S
Maximum lift height to pivot pin (in)	78	90	112	118	127	122	136	131	150	161	154	168	168
Reach at maximum lift height (in)	N/A	15	22	20	28	33	32	37	30	26	34	29	41
Maximum dump angle (deg)	45	40	25	27	38	38	41	41	59	32	32	40	40
Maximum rollback angle (deg)	14	19	32	31	23	20	18	18	34	21	22	22	22
Digging depth (in)	3.9	3.3	2.2	2.9	5.2	5.2	5.5	5.5	9.1	4.4	4.4	4.5	4.5
Overall height in carry position (in)	48	51	59	59	67	67	75	75	79	81	80	86	86
Lift capacity to maximum height - at pivot point (lb.) optional cylinder	525	1150	1625	1500	2075	2100	2425	2450	3275	3100	3175	4675	4675
Lift capacity to maximum height (lb.) optional cylinder	350	775	1150	1075	1375	1400	1650	1675	2225	2075	2100	3325	3325
Breakout force - at pivot point (lb.) optional cylinder	1200	2175	2775	2425	3475	3750	5425	5825	7375	6825	7500	10150	10150
Breakout force (lb.) optional cylinder	850	1600	2150	1900	2500	2650	3875	4125	5400	5050	5425	7600	7600
Hydraulic pressure rating/flow rate (psi)/(gpm)	1800/5	2000/5	2500/10		2500/10		2500/15		2500/15	2500/15		2500/20	
Tractor size (HP @ normal duty)	15-25	20-35	30-45	35-75	50-100		50-120		75-150	75-150		130-190	
Weight (with bkt & mtg kit) (lb.)	475	775	1285	1515	2070		2190		2585	2760		3390	



Midmount 2000 Series Designed specifically for modern tractors, the Midmount 2000 Series provides enhanced visibility, increased lifting capability and superior breakout force. The Midmount 2000 Series provides easier access for service, more clearance for tractors with front wheel assist and extra room for front mounted fenders. Mechanical true self-leveling is available on models 2495 to 2895.

Clearance

Midmount loaders feature grease fittings at the outer end of the pins for easier greasing. Improved clearance means that front fenders can usually remain in place, servicing of the tractor is easier, and full wheel oscillation and turning radius can be maintained without any restrictions.

PRODUCT OVERVIEW

- › Designed for newer model tractors
- › Large mounting kit application list
- › For tractors ranging from 15 to 275 hp

FEATURES

- › True Self-Leveling available on models 2495 and larger
- › Heavy-duty parallel bucket linkage

OPTIONS

- › Direct mounted or cable remote joystick

AVAILABLE COLORS*

- Red
- Black
- Blue
- Green
- Orange

*Black is the standard color.

Quick Attach

The Midmount 2000 Series quick attach method, standard on the 2495 and larger models, is consistent with the Euro style system to allow for improved interchangeability of attachments. An optional skid steer quick attach truly makes your front-end loader a multi-use tool carrier. Available for models up to 2595.

Heavy-Duty Parallel Bucket Linkage

A distinctive feature on all Allied Midmount 2000 Series front-end loaders is the heavy-duty parallel bucket linkage, usually seen only on self-leveling loaders. This greatly increases rollback and dump angles.

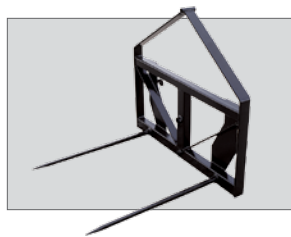
Model	2095	2195	2295	2395	2495	2495 TSL	2495 S	2495 S TSL	2595	2595 TSL	2595 S	2595 S TSL	2695	2795 HD	2795 HD TSL	2795 HD S	2795 HD S TSL	2895	2895 TSL	2895 S	2895 S TSL	3995 TSL
Maximum lift height to pivot pin, in	76	102	112	123	140	140	136	136	145	145	142	142	157	164	164	157	157	181	181	169	169	181
Reach at maximum lift height, in	21	30	22	15	21	21	25	25	29	28	32	32	37	29	29	37	37	29	29	20	20	29
Maximum dump angle, deg	46	50	51	49	44	44	44	44	48	49	46	48	50	50	50	50	51	62	61	62	61	61
Maximum rollback angle, deg	22	36	33	39	41	41	41	41	38	38	38	38	34	34	34	34	34	37	37	37	37	37
Digging depth, in	4.0	3.7	4.0	4	5.0	5.0	5.0	5.0	7.0	7.0	5.5	5.5	4.0	5.0	5.0	4.0	4.0	5.0	5.0	5.0	5.0	5.0
Overall height in carry position, in	41	48	58	58	83	86	83	86	85	87	85	86	86	86	87	86	87	101	103	101	103	103
Lift capacity to max height - at pivot point, lb. optional cylinder	855	1295	3477	3330	4015 6250	4050	4060 6315	6270	3425 5395	5355	3465 5455	5410	3770	3685	3680	3770	3760	7000	6900	6900	6875	6900
Lift capacity to max height, lb. optional cylinder	598	853	2560	2450	2605 4050	4050	2620 4075	4045	2330 3670	3645	2335 3680	3650	2660	2610	2605	2660	2665	4950	4950	4925	4925	4950
Breakout force - at pivot point, lb. optional cylinder	1420	2360	5656	4871	4845 7535	7545	5215 8070	8005	4795 7490	7425	5180 8040	7970	7145	6440	6460	7145	7160	8475	8500	9950	9950	8500
Breakout force, lb. optional cylinder	1004	1738	4349	3858	3515 5465	5475	3715 5750	5705	3480 5435	5385	3695 5735	5690	5185	4780	4795	5185	5190	6550	6550	7450	7475	6550
Hydraulic pressure rating/flow rate, psi/gpm	1800/5	2000/5	2500/10		2500/15				2500/15				2500/15				2500/20				2500/20	
Tractor size (HP @ normal duty)	15-25	20-35	30-45	35-75	50-100				50-120				75-130	75-130				130-275				150-300
Weight (with bkt & mtg kit), lb.	500	600	1380	1395	2100				2200				2800	2800				3800				4275



Standard A Frame

For loader models 95, 195, 295, 395, 495, 595, 695, 2495, 2595, and 2596. Ideal for round bales. Skid steer A Frame also available.

All Series
Weight: 490 lb
No. of spears: 1
Spear lengths: 32" / 49"



Regular A Frame

For loader models 395, 495, 595, 695, 795, 2495, 2595, 2596, 2795HD and 2895. Available in skid steer and Euro style models.

All Series	
No. of spears: 1-3	
Spear lengths: 32" / 49"	
95 Series	Skid Steer
Weight: 254 lb	Weight: 329 lb
Midmount 2000 Series	
Weight: 222 lb	



Heavy-duty A Frame

60" for loader models 595, 695, 795, 895, 2595, 2596, 2795HD and 2895. Designed for round or square bales. 75" model designed to handle 6' plus diameter round bales.

60" Model
Weight: 310 lb
No. of spears: 1-3
Spear lengths: 32" / 49"
75" Model
Weight: 350 lb
No. of spears: 1-5
Spear lengths: 32" / 49"



Pallet Fork A Frame Kit

Available for all loader models and designed to fit on all 'A' frame models. Forks available in 48" (4,400 lb capacity) and 42" (2,000 lb capacity) sizes.

60" Model
Weight: 690 lb
75" Model
Weight: 730 lb



Standard Bucket

Available in 48", 60", 72", 84", 96" and 100". Capacities range from 6.3 cu. ft. up to 1.19 cu. yd.

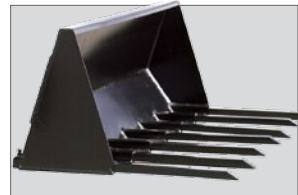
95 Series
Weight: 490 lb
Midmount 2000 Series
Weight: 510 lb



Large Capacity/Snow Bucket

Available in 84" and 100" sizes. Capacities range from 1.35 cu. yd. up to 2.25 cu. yd.

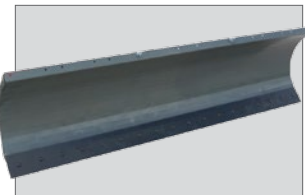
95 Series
Weight: 905 lb
Midmount 2000 Series
Weight: 980 lb



Manure Bucket

Available in 67" and 85" sizes. Dirt plate extension kits are available to convert bucket to standard use. Tines are included.

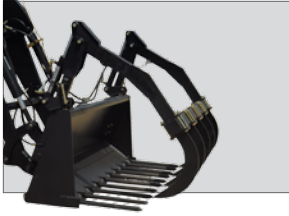
67" Model
Weight: 450 lb
85" Model
Weight: 525 lb



Snow Blade

For front end loader or skid steer configuration. Reversible cutting edge. Dual acting cylinder hydraulics provide hands free angle adjustment.

Skid Steer and Euro Mount
Widths: 60" to 108"
Cutting edge: 3/8" x 6"
Weights: 334 lb to 690 lb



C2000 Series Grapple

Comes standard with 84" cross tube to fit on 84" and larger standard and large capacity buckets. Also designed for 85" manure bucket with ten tines as shown here.

C2000 Model
Weight: 565 lb
C2062 Model
Weight: 565 lb

*based on grapple only

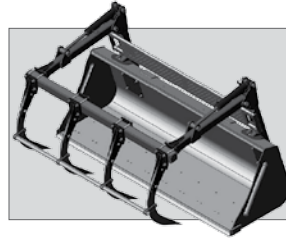


C3000 Series Grapple

Grapple comes standard with 84" cross tube to fit on 84" and larger standard and large capacity buckets. Specifically designed to handle 6' plus diameter round bales.

C3000 Model
Weight: 785 lb
C3001 Model
Weight: 801 lb

*based on grapple only



C4000 Series Grapple

Non Quick Attach grapple, comes standard with 84" cross tube to fit on 84" and larger standard and large capacity buckets, specifically designed to handle 6' plus diameter round bales.

C4000
Weight: 750 lb

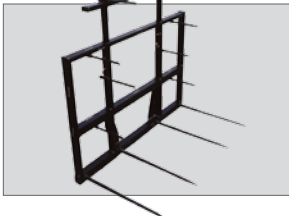
*based on grapple only



Brush Grapple

50" grapple opening. Available in skid steer or tractor mounting configurations. Replaceable weld-on tine points.

6254 Model
Weight: 790 lb
HP required: 95 PTO hp
7764 Model
Weight: 970 lb
HP required: 150 PTO hp



Square Bale Stacker Frame

For models 895, 2495, 2595, 2596, 2795HD, 2895. Up to 8 additional stabilizer spears. Telescopic extension kit - for up to 3 square bales at a time.

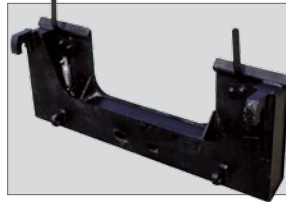
95 Series
Weight: 440 lb
No. of spears: 1-4
Spear lengths: 32" / 49"
Midmount 2000 Series
Weight: 400 lb
No. of spears: 1-4
Spear lengths: 32" / 49"



Round Bale Squeeze

For loader models 395, 495, 595, 695 and 795. Euro and skid steer mount available. Designed for round bales, wrapped or dry. Both arms hydraulically open to clamp the bale.

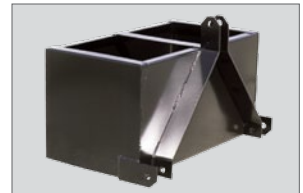
4872 Model
Bales: 4' - 6'
Rated: 2,200 lb



Skid Steer Adapter Plate

For models 95, 195, 295, 395, 495, 595, 2095, 2195, 2295, 2395, 2495, 2595 and 2596. Allows the user to pick up any skid steer attachment.

Skid Steer
Weight: 120 lb



Ballast Box

For loader models 95, 2095, 195 and 2195. Provides weight to the rear axle, which in turn increases the stability and traction of your tractor.

95 Series
Weight: 57 lb
Midmount 2000 Series
Weight: 57 lb

www.farm-king.com

ALLIED
by **FarmKing**

1330 43rd Street NW
Fargo, ND USA 58102
Toll Free: 877.447.6008
Ph.: 701.282.7014 | Fax: 701.282.5865
E-mail: info@buhler.com
www.farm-king.com

Equipment shown is subject to change without notice. ©2011 BuhlerTrading Inc.
Printed in Canada. TSX:BUI Ref: 072011-3000-LM P/N: PLOADER

bühler | a division of Buhler Industries Inc.

