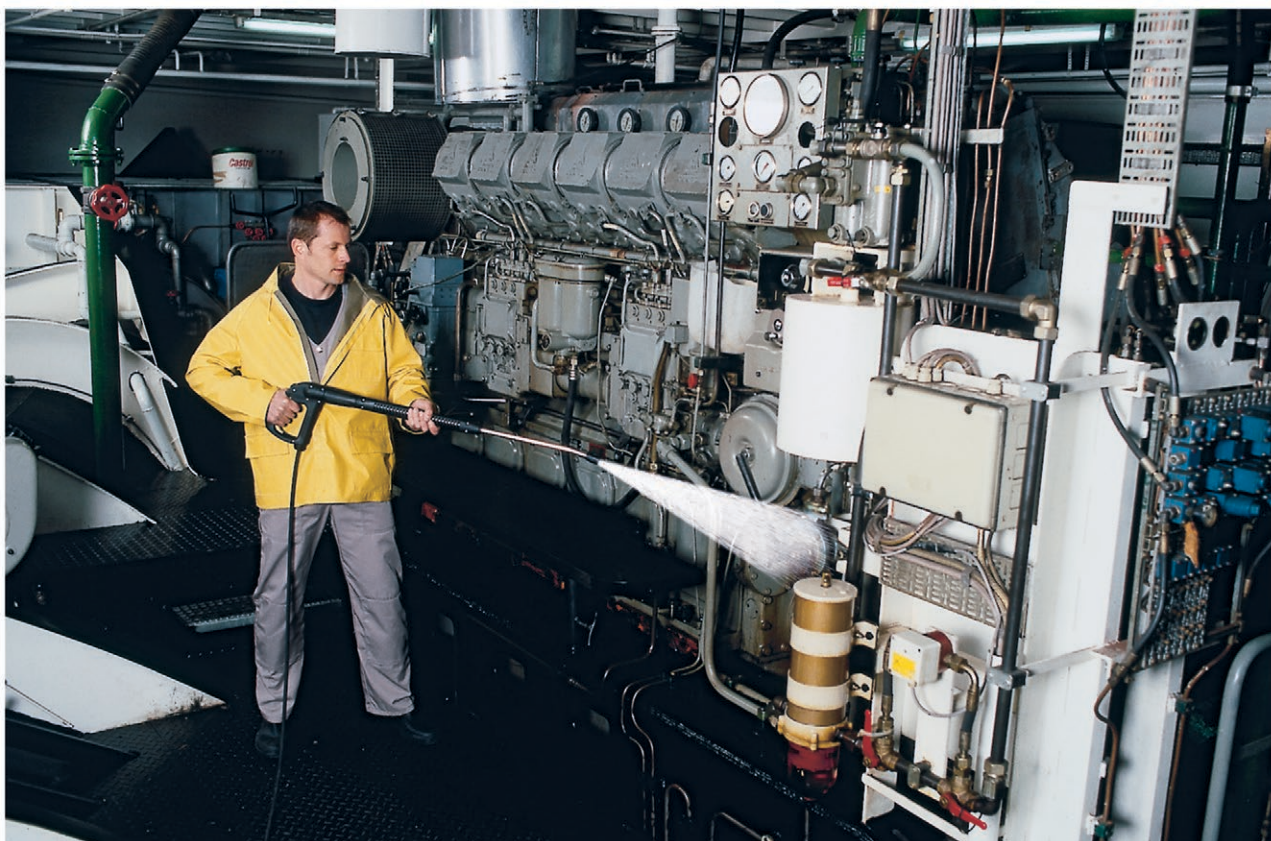




HDS 4.0/22 Ea ST NG

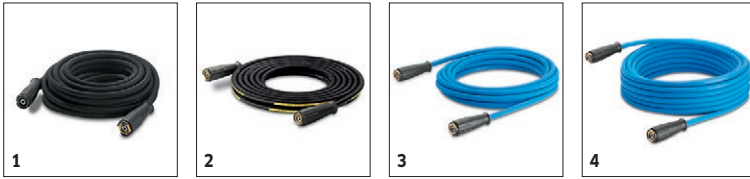
Rugged natural gas heated cabinet pressure washer built for convenience and easy maintenance. The motor and pump are backed by generous 7-year warranties.



HDS 4.0/22 Ea ST NG

Technical data

Water Volume	GPM	4
Operating pressure	PSI	2200
Connected load	A	29
Power rating	hp	6,2
Weight	lbs	843
Dimensions (L x W x H)	in	49 x 24 x 48
Power supply	Ph / V / Hz	1 / 230 / 60



		Order no.	ID		Length	RRP	Description	
Standard with unions on both sides								
High-pressure hose packaged	1	6.391-342.0	ID 8	315 bar	10 m			▲
Longlife 400 with unions on both sides								
High-pressure hose packaged	2	6.391-354.0	ID 8	400 bar	10 m			▲
Longlife food design with screw connections at both ends								
High pressure hose food DN 8 / 10 m	3	6.391-864.0	ID 8	400 bar	10 m			▲
High-pressure hose food industry 400 bar, 20 m, DN 8, including rotary coupling	4	6.391-887.0	ID 8	400 bar	20 m			▲

□ Available accessories. ▲ Extension hose.



1



2

		Order no.	Length				RRP	Description	
Automatic, self-winding hose reels									
Add-on kit hose reel plastics	1	6.392-975.0	20 m						<input type="checkbox"/>
Add-on kit hose reel	2	6.392-965.0	20 m						<input type="checkbox"/>

Available accessories. Extension hose.