

# X SERIES MANURE SPREADERS

**X350, X550, X700 & X900**



**VAI**  
ART'S WAY

[artsway.com](http://artsway.com)



# SMALL SIZE UNITS

## Big spreading power packed in a small box

The X350 and X550 bring the same industry leading spread pattern to producers in a smaller capacity box build for your lots. With box lengths of 25 and 30 feet, easily maneuver in and out of gates. Operate your floor chain speed and gate height to achieve the amount per acre for best nutrient management. We have two models to choose from with lower horse power requirements:

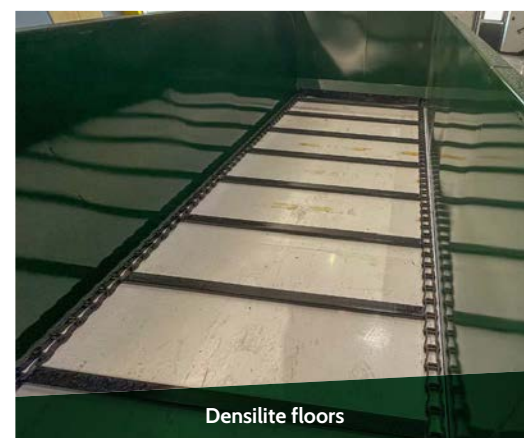
- ▶ X350: 367 heaped cu. ft.
- ▶ X550: 551 heaped cu. ft.



Used military tires



88C open barrel chain



Densilite floors

### Fill quickly with a skid steer

Easy filling with low loading heights of 74 in. on our X350 and 82 in. on our X550 with used military tires. The flared sides on the X550 allow you to easily load material from the side over the wheel to decrease material loss and load time.



	X350	X550
Box length	14.5 ft.	19 ft.
Overall length	301 in.	349 in.
Overall width (with tires)	101 in./118 in.	118 in./133 in.
Overall height	99 in./101 in.	107 in./109 in.
Load height	74 in./76 in.	82 in./84 in.
Capacity - heaped	367 cu. ft.	551 cu. ft.
Capacity - struck	247 cu. ft.	384cu. ft.
Empty weight	8,020 lb.	10,600 lb.
Inside width of box	59 in.	59 in.
Inside height of box	39.5 in.	39.5 in.
Flared sides	NA	45°
Apron chain	88C	88C
Floor material	1/2 in. Densilite	1/2 in. Densilite
Reversible apron	Yes	Yes
Swivel hitch	2 in.	2 in.
Gear drive	350 gear drive	350 gear drive
Axles	Tandem or single	Tandem
Tires	425 Used Truck or 16.00/R-20	16.00/R-20
Flotation tires (optional)	550/45R 22.5 or 660/65R 22.5	660/65R 22.5
CV PTO	540, 1-3/8" or 1-3/4" 1000 RPM	1-3/8" or 1-3/4" 1000 RPM
Slop gate cylinders	Chief	Chief
Vertical beaters	SRT8 removable	SRT8 removable
Power recommendation	150 hp	175 hp

### Diverse carrying options

The X350 features a single axle with 16 R-20 used military tires or 660/50 R 22.5 flotation tires. Upgrade to a tandem axle and choose 425 used truck tires or 550/45R 22.5 flotation tires. These allow you to pull the load smoothly behind your tractor without taking the field out with you.

### Dependable

Our 88C chain boasts a limited lifetime warranty so you know you are always covered while in used. With 38,000 lb. of strength per chain, carry your material towards or away from the beaters. Robust behind your tractor without taking the field out with you. of strength per chain, carry your material towards or away from the beaters. Robust tube steel slats provide additional durability while moving more and more manure.

### Rugged box build

Densilite floors have minimal thermal expansion and contraction for less cracking and buckling with temperature changes. Better yet, it creates a slick surface for enhanced material flow. 2 inch uprights on 2 foot centers provide a strong structure for hauling.



# MID-SIZE UNITS

## Two Models to Spread Goodness on Your Farm or Ranch

The X Series is meant to spread it wide and far with even field coverage. The amount needed depends on you and your operational needs. We have two models to choose from. Rest assured, the spray is smooth and even no matter how you cut it. Let's break it down:

- ▶ X700: 473 struck cu. ft. and 683 heaped cu. ft.
- ▶ X900: 625 struck cu. ft. and 909 heaped cu. ft.



Used military tires



Densilite floors



88C open barrel chain

### Used Military Tires

X Series Spreaders feature tandem axles with 16 R-20 tires. These allow you to pull the load smoothly behind your tractor without taking the field out with you. What's more, 660/50 R 22.5 flotation tires are available for decreased soil compaction in your fields and lower loading weight.

### Simple to Fill

Easy loading is made possible by our flared sides and low loading heights of 92 in. on our X700 and 94 in. on our X900 with standard tires. Even better heights with our flotation tires, 89 in. on our X700 and 91 in. on our X900. The flared sides allow you to easily load material from the side over the wheel to decrease material loss and load time.

### Long Box Life

Densilite floors have minimal thermal expansion and contraction for longer life. Better yet, it creates a slick surface for enhanced material flow.

### Dependable

Our 88C chain boasts a limited lifetime warranty so you know you are always covered while in used. With 38,000 lb. of tensile strength per chain, carry your material towards or away from the beaters. Robust tube steel slats provide additional durability while moving more and more manure.

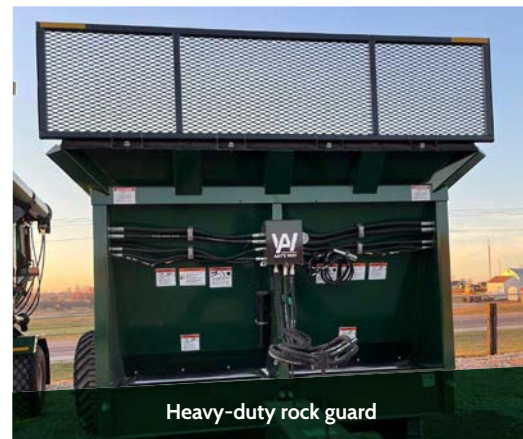
	X700	X900
Box length	18 ft.	20 ft.
Overall length	27 ft. 8 in.	30 ft. 11 in.
Overall width (with tires)	11 ft. 1.5 in.	11 ft. 5.5 in.
Overall height	114 in./ 117 in.	113 in./ 116 in.
Load height	7 ft. 8 in.	7 ft. 10 in.
Capacity - heaped	683 cu. ft.	909 cu. ft.
Capacity - struck	473 cu. ft.	625 cu. ft.
Empty weight	12,200 lb.	16,800 lb.
Inside width of box	6 ft.	6 ft.
Inside height of box	4 ft. 3 in.	4 ft. 8 in.
Flared sides	45°	45°
Apron chain	88C	88C
Floor material	3/4 in. Densilite	3/4 in. Densilite
Reversible apron	Yes	Yes
Swivel hitch	2 in.	2 in.
Gear drive	Double 350 gear drive	Double 350 gear drive
Axles	Tandem	Tandem
Tires	16.00/R-20	16.00/R-20
Flotation tires (optional)	660/65R 22.5	660/65R 22.5
CV PTO	1-3/8" or 1-3/4" 1000 RPM	1-3/8" or 1-3/4" 1000 RPM
Slop gate cylinders	Prince	Prince
Vertical beaters	SRT8 removable	SRT18 removable
Power requirement	120-150 hp	180-200 hp
Shipping dimensions	8 ft. 5 in. x 28 ft. x 9 ft. 10 in.	8 ft. 5 in. x 32 ft. x 9 ft. 10 in.

## X SERIES MANURE SPREADERS





Bright LED lights



Heavy-duty rock guard



Hydraulic grips

### Transport Safety

Bright LED lights, a strong safety chain and a convenient heavy-duty jack make you more visible and secure on the road. Move manure wisely.

### Operator Protection

A heavy-duty rock guard is mounted on the front for maximum protection. Because safety is a front and back proposition.

### Operator Convenience

Slip resistance and color-coded hydraulic grips make hooking up a breeze. A bolt tensioning system allows for in-the-field chain adjustment. Grease points maintain smooth machine operation and can be easily accessed.



Even Spread pattern

### Even Spread Pattern

The guillotine style slop gate precisely controls how the material enters vertical beaters. Hydraulic cylinders operate the gate up and down. Combined with two powerful beaters, this creates fewer clumps in your field and smooth even coverage. The key is the angle of the beaters and how the floor feeds into them.



Common components

### Common Components

Service your spreader with quality Art's Way replacement parts that come in black for installation on any color box.

## X Series Spreader Options



Scale system

### Scale Systems

A scale option to meet the needs of any operation. Monitor your load weight and application poundage with the GT400 indicator on NT560 Indicator. Get precise flow control with the complete Raven System.



Litter paddle kit

### Litter Paddle Kit

Art's Way beaters get even better with our litter paddle kit. This option allows you to maintain a more consistent spread pattern with even the finest materials.



Optional harden beater teeth kit

### Harden Beater Teeth Kit

An optional kit with hardened teeth gives you extended life on your machine. The teeth are 1/2 in. steel with welded edge and 1/2 in. thick reversible knives.

### Flotation Tires

Creates less field compaction and utilize a lower loading height when you choose the flotation tires instead of our standard used military tires.



### GT400 Digi-Star Indicator

- Basic scale functions
- Easy to calibrate
- Economic decision



### NT560 Digi-Star Indicator

- Advanced scale functions
- Auto Log Feature
- GPS and record documentation
- Live application rate readout
- USB stick and software for data transfer
- Ton per acre or pounds per acre



### Raven Rate Control Module

- ISOBUS compatible
- Automated rate application
- Uses existing load cells
- Intuitive user interface
- Expandable option for multi-product
- On-screen configuration



### Raven CR7 Monitor

- ISOBUS compatible
- GPS included (500S antenna)
- 7 in. full touch screen
- Slingshot compatible (file transfer)
- Raven Auto Steer supported



## X SERIES MANURE SPREADERS





Art said it best: "we may be around muck all day, but we don't muck around."

**Art's Way: How Work Gets Done.**



**Want to watch it work?**  
See the manure spreaders in action by scanning the QR code below.



Get your hard work done with Art's Way — contact your nearest dealer today.

**(712) 208-8467 | [artsway.com](http://artsway.com)**



**VAI**  
**ART'S WAY**  
**700125**

Art's Way Manufacturing Co. Inc. reserves the right to change design or specific application purposes. Photographs contained herein may be displayed with safety shields and/or guards removed to show mechanical functions only. All brand or product names are or may be trademarks of, and are used to identify products and services of their respective owners or its subsidiaries and divisions in the U.S. and/or other countries. All specifications are subject to change without notice. © 2022 Art's Way. All Rights Reserved.

