

MULCHERS FOR SKID STEERS

DML/SSL - DML/SSL/VT



from 40 to 70 HP



Ø 12 cm max

FORESTRY MULCHER WITH FIXED BLADE ROTOR FOR SKID STEERS.

The DML/SSL is the smallest of the FAE fixed tooth mulchers designed and manufactured to be utilized with skid steers up to 70 HP. The heavy duty construction of the frame makes it a long term investment, while the special design of the fixed tooth rotor allows a neat cut of the material and guarantees maximum reliability and high performance. The automatic variable displacement hydraulic motor with mechanical adjustment makes it the ideal solution for skid steers that are not equipped with a high flow system.



STANDARD EQUIPMENT

- Enclosed machine body
- Belt transmission
- 17/34cc variable manual displacement hydraulic piston motor with relief and anticavitation valve (DML/SSL) - (50 - 100 L/min)
- 55/38cc variable torque hydraulic piston motor (DML/SSL/VT) - (60 - 115 L/min)
- Hydraulic hoses
- Hydraulic rear hood
- Welded counter blade

- Working pressure control gauge
- Push frame
- Diverter valve
- Motor integrated into the frame

OPTIONS

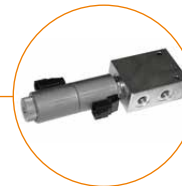
- 32/65cc variable manual displacement hydraulic piston motor with relief and anticavitation valve (DML/SSL) - (90 - 130 L/min)
- Customized setting hydraulic motor (DML/SSL/VT)



External pressure control Gauge

VT motor setting

Adjustable motor to obtain the maximum performance out of any skid steer



Diverter valve to control hood cylinder

to control the opening and closing of the hydraulic door

Steel counter-blades

helps mulch material into a smaller final size

MODEL	Engine (HP)		Flow rate (L/min)		Pressure (bar)		Working width (mm)	Total width (mm)	Weight (kg)	Max shredding diameter (mm)	No. blades type E
	min	max	min	max	min	max					
DML/SSL 125	40	70	50	130	180	250	1240	1520	685	120	30
DML/SSL 150	40	70	50	130	180	250	1480	1760	785	120	36
DML/SSL 175	40	70	50	130	180	250	1720	2000	885	120	42
DML/SSL/VT 125*	40	70	60	115	180	350	1240	1520	685	120	30
DML/SSL/VT 150*	40	70	60	115	180	350	1480	1760	785	120	36
DML/SSL/VT 175*	40	70	60	115	180	350	1720	2000	885	120	42

Data refers to machine as standard. The technical data in this catalog may be altered without prior notice.

*Variable displacement hydraulic motor.