



HEAD OFFICE 20 ARTHUR STREET NORTH, ELMIRA, ONTARIO N3B 1Z9
 TEL: (519) 669-4025 FAX: (519) 669-1436

ORDER DESK e-mail: orders@walcoequipment.com
 TEL: (519) 669-1401 FAX (519) 669-3499

QUEBEC OFFICE 364 RTE.122 ST. GERMAIN DE GRANTHAM, QUÉBEC J0C 1K0
 TEL: (819) 395-5115 Fax (819) 395-2624
 e-mail: walcoqc@walcoequipment.com

SECTION

B

PAGE 1



LOADER ATTACHMENTS

Walco Renegade loader buckets can be used in multiple applications. Each design offers unique features. All buckets are drilled and constructed with strong, durable material.

CUTTING EDGES: corners are welded together to ensure longer wear and added durability.
 Sizes up to 84" are welded (1/2" x 6"). Sizes 96" and up, are welded (3/4" x 6") Bolt-on edges optional.

All Renegade skid steer loader buckets come with Safety Treads to prevent accidents. Steps give feet a solid foundation, and texture prevents slipping when wet or muddy.

ALL PRICES SHOWN ARE FOR UNIVERSAL SKID STEER, JD4401540 AND EURO TACH

FOR ALL OTHERS, CALL FOR PRICE AND AVAILABILITY



SKID STEER BUCKET - LOW PROFILE

1/4" material for bucket body
 5/8" x 6" Cutting edge
 Buckets punched w/ 6" spaced holes for bottom cutting edge
 27" Deep
 18" High

SKID STEER		EURO TACH		JANUARY 1, 2020	
ITEM #	ITEM #	MFG. #	DESCRIPTION	APPROX.WT/LB	LIST PRICE
144400	144005	60WALP	60" Bucket - Low profile - no teeth	335	\$
144401	144006	66WALP	66" Bucket - Low profile - no teeth	380	\$
144402	144007	72WALP	72" Bucket - Low profile - no teeth	385	\$
144403	144008	78WALP	78" Bucket - Low profile - no teeth	400	\$
144404	144009	84WALP	84" Bucket - Low profile - no teeth	420	\$



SKID STEER BUCKET -LOW PROFILE - LONG BOTTOM

1/4" Material for bucket body
 5/8" x 6" Cutting edge
 Buckets punched w/ 6" spaced holes for bottom cutting edge
 36" Deep
 18" High

SKID STEER		EURO TACH		JANUARY 1, 2020	
ITEM #	ITEM #	MFG. #	DESCRIPTION	APPROX.WT/LB	LIST PRICE
144410	144415	60WALB	60" Bucket - Low profile - no teeth - w/long bottom		\$
144411	144416	66WALB	66" Bucket - Low profile - no teeth - w/long bottom	416	\$
144412	144417	72WALB	72" Bucket - Low profile - no teeth - w/long bottom	442	\$
144413	144418	78WALB	78" Bucket - Low profile - no teeth - w/long bottom	448	\$
144414	144419	84WALB	84" Bucket - Low profile - no teeth - w/long bottom	465	\$



SKID STEER BUCKET - SNOW AND LITTER

Use for a variety of light materials such as grain, seed and mulch. Get maximum use of the lifting capacity of the skid steer machine.
 1/4" Material for bucket body 1/2" Bottom Plate
 Buckets punched w/ 6" spaced holes for bottom cutting edge
 37" Deep - 24" High

SKID STEER		EURO TACH		JANUARY 1, 2020	
ITEM #	ITEM #	MFG. #	DESCRIPTION	APPROX.WT/LB	LIST PRICE
144426	144476	66WASL	66" Bucket - Snow & Litter		\$
144427	144477	72WASL	72" Bucket - Snow & Litter	525	\$
144428	144478	78WASL	78" Bucket - Snow & Litter	550	\$
144429	144479	84WASL	84" Bucket - Snow & Litter		\$



SKID STEER LOADER BUCKET - COMPACT UTILITY

22-1/2" deep - 18" High

SKID STEER		EURO TACH		JANUARY 1, 2020	
ITEM #	ITEM #	MFG. #	DESCRIPTION	APPROX.WT/LB	LIST PRICE
144394		WA-BUCH-UT	66" inside Compact Skid Steer loader bucket		\$
144395		WA-BUCK-UT	72" inside Compact Skid Steer loader bucket	305	\$

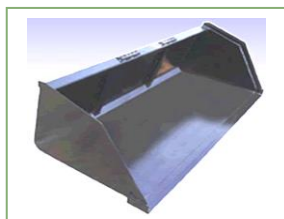


SKID STEER LOADER BUCKET – HIGH VOLUME

3/16" Material for bucket body 1/4" End Plates
Buckets are punched w/ 6" spaced holes for
bottom cutting edge 5/8" x 6" Cutting Edge
36" Deep
29" High

JANUARY 1, 2020

SKID STEER	EURO TACH				
ITEM #	ITEM #	MFG. #	DESCRIPTION	APPROX.WT/LB	LIST PRICE
144436			60" High Volume Skid Steer Bucket BO500		\$
144437			66" High Volume Skid Steer Bucket BO500		\$
144438			72" High Volume Skid Steer Bucket BO500	510	\$
144439			78" High Volume Skid Steer Bucket BO500		\$
144440			84" High Volume Skid Steer Bucket BO500		\$



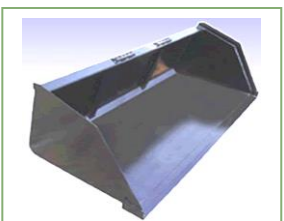
TRACTOR LOADER BUCKET COMPACT UTILITY

3/16" Material for bucket body 1/4" End Plates
Buckets are punched w/ 6" spaced holes for
bottom cutting edge 5/8" x 4" Cutting Edge
18" Deep
19" High

**ALL PRICES SHOWN ARE FOR
UNIVERSAL SKID STEER,
JD4401540 AND EURO TACH**

**FOR ALL OTHERS, CALL FOR
PRICE AND AVAILABILITY**

SKID STEER	EURO TACH				
ITEM #	ITEM #	MFG. #	DESCRIPTION	APPROX.WT/LB	LIST PRICE
144238	144244		42" inside Compact utility loader bucket		\$
144239	144245		48" inside Compact utility loader bucket	195	\$
144240	144246		54" inside Compact utility loader bucket	210	\$
144241	144247		60" inside Compact utility loader bucket	235	\$



TRACTOR LOADER BUCKET - STANDARD

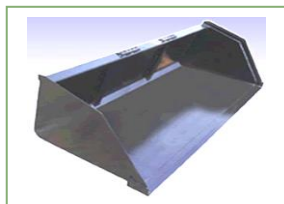
3/16" Material for bucket body - 1/4" End Plates
5/8" x 4" Cutting Edge
Buckets are punched w/ 6" spaced holes for bottom cutting edge
29" Deep
25" High

SKID STEER	EURO TACH				
ITEM #	ITEM #	MFG. #	DESCRIPTION	APPROX.WT/LB	LIST PRICE
144200		48" WATMB	48" Standard material bucket	279	\$
144201	144225	54" WATMB	54" Standard material bucket		\$
144202		60" WATMB	60" Standard material bucket		\$
144203		66" WATMB	66" Standard material bucket		\$
144204		72" WATMB	72" Standard material bucket	425	\$
144205		78" WATMB	78" Standard material bucket		\$
144206	144234	84" WATMB	84" Standard material bucket		\$
144208	144236	96" WATMB	96" Standard material bucket		\$

TRACTOR LOADER BUCKET - HEAVY DUTY

1/4" MATERIAL 1/4" END PLATES - 5/8 X 6" CUTTING EDGE - 25" HIGH - 26" DEEP

SKID STEER	EURO TACH				
ITEM #	ITEM #	MFG. #	DESCRIPTION	APPROX.WT/LB	LIST PRICE
144213	144229	72" WATMBHD	72" Heavy duty material bucket		\$
144214	144230	78" WATMBHD	78" Heavy duty material bucket		\$
144215	144231	84" WATMBHD	84" Heavy duty material bucket		\$
144217	144232	96" WATMBHD	96" Heavy duty material bucket		\$
144218	144233	108" WATMBHD	108" Heavy duty material bucket	760	\$
			Bolt-on edges - with bolts	per foot	\$



TRACTOR LOADER BUCKET – STANDARD – HIGH VOLUME

3/16" Material for bucket body - 1/4" End Plates
5/8" x 4" Cutting Edge
Buckets are punched w/ 6" spaced holes for bottom cutting edge
37" Deep
32" High

SKID STEER	EURO TACH				
ITEM #	ITEM #	MFG. #	DESCRIPTION	APPROX.WT/LB	LIST PRICE
144340		60" WAHVTB	60" Standard – high volume material bucket		\$
144341		66" WAHVTB	66" Standard – high volume material bucket		\$
144342	*	72" WAHVTB	72" Standard – high volume material bucket		\$
144343		78" WAHVTB	78" Standard – high volume material bucket		\$
144344		84" WAHVTB	84" Standard – high volume material bucket		\$
144346		96" WAHVTB	96" Standard – high volume material bucket		\$

CUTTING EDGES ONLY - DOUBLE BEVELLED**JANUARY 1, 2020**

ITEM #	DESCRIPTION	SIZE	LIST PRICE
144181	Renegade Cutting edge - Double Bevelled w/ 6 Bolts	5/8" x 6" x 48"	\$
144182	Renegade Cutting edge - Double Bevelled w/ 6 Bolts	5/8" x 6" x 54"	\$
144183	Renegade Cutting edge - Double Bevelled w/ 6 Bolts	5/8" x 6" x 60"	\$
144184	Renegade Cutting edge - Double Bevelled w/ 6 Bolts	5/8" x 6" x 66"	\$
144185	Renegade Cutting edge - Double Bevelled w/ 8 Bolts	5/8" x 6" x 72"	\$
144186	Renegade Cutting edge - Double Bevelled w/ 7 Bolts	5/8" x 6" x 78"	\$
144187	Renegade Cutting edge - Double Bevelled w/ 8 Bolts	5/8" x 6" x 84"	\$
144188	Renegade Cutting edge - Double Bevelled w/ 10 Bolts	5/8" x 6" x 96"	\$
144189	Renegade Cutting edge - Double Bevelled w/ 10 Bolts	5/8" x 6" x 108"	\$
144190	Renegade Cutting edge - Double Bevelled w/ 10 Bolts	5/8" x 6" x 120"	\$

**SNOW BUCKET - SKID STEER**

3/16" Material for bucket body - 1/4" End Plates
 5/8" x 6" Bolt-On Cutting Edge - Installed
 38" Deep
 32" High



SKID STEER	EURO TACH	DESCRIPTION	CAPACITY	HIGHT	WIDTH	APPROX.WT/LB	LIST PRICE
145007	145011	Skid str snow bucket 3/16" wrap 1/4" sides	30 cu. ft.	32-1/2"	72"	735	\$
145006	145012	Skid str snow bucket 3/16" wrap 1/4" sides	32.5 cu. ft.	32-1/2"	78"	775	\$
145005	145013	Skid str snow bucket 3/16" wrap 1/4" sides	35 cu. ft.	32-1/2"	84"	800	\$
145004	145014	Skid str snow bucket 3/16" wrap 1/4" sides	37.5 cu. ft.	32-1/2"	90"		\$
145003	145015	Skid str snow bucket 3/16" wrap 1/4" sides	40 cu. ft.	32-1/2"	96"	915	\$
145002	145016	Skid str snow bucket 3/16" wrap 1/4" sides	45 cu. ft.	32-1/2"	108"	1005	\$
145010	145017	Skid str snow bucket 3/16" wrap 1/4" sides	50 cu. ft.	32-1/2"	120-1/4	1080	\$

**MANURE FORK - UNIVERSAL SKID STEER**

SKID STEER	EURO TACH	MFG. #	DESCRIPTION	APPROX.WT/LB	LIST PRICE
145211	145212		60" Manure Fork with 8 - 36" tines		\$
145215	145216		72" Manure Fork with 9 - 36" tines		\$
145217	145218		84" Manure Fork with 11 - 36" tines		\$

**BALE SQUEEZER**

With hydraulic cylinder and hoses
 Designed for gentle handling of heavy wrapped silage bales
 Accepts standard 8" stroke implement cylinder
 Opens up to 71"

SKID STEER	EURO TACH	MFG. #	DESCRIPTION	APPROX.WT/LB	LIST PRICE
146425	146426		Bale Squeezer complete with hoses and cylinder	aprox. 575	\$

**SKID STEER & TRACTOR LOADER**

SKID STEER	EURO TACH	MFG. #	DESCRIPTION	APPROX.WT/LB	LIST PRICE
146600	146660	60RBLT	60" Rock Bucket with large teeth		\$
146601	146661	66RBLT	66" Rock Bucket with large teeth		\$
146602	146662	72RBLT	72" Rock Bucket with large teeth	600	\$
146603	146663	78RBLT	78" Rock Bucket with large teeth		\$
146604	146664	84RBLT	84" Rock Bucket with large teeth		\$



ROCK BUCKET FLAT BOTTOM – SKID STEER & TRACTOR LOADER

18.4" High
34" Deep
Tines 3/8" thick, Approx. 3" spacing



JANUARY 1, 2020

SKID STEER	EURO TACH			APPROX.WT/LB	LIST PRICE
ITEM #	ITEM #	MFG. #	DESCRIPTION		
146621	146671	60FBRB	60" Rock Bucket – flat bottom		\$
146622	146665	66FBRB	66" Rock Bucket – flat bottom		\$
146623	146666	72FBRB	72" Rock Bucket – flat bottom		\$
146624	146667	78FBRB	78" Rock Bucket – flat bottom	470	\$
146625	146670	84FBRB	84" Rock Bucket – flat bottom		\$



ROCK BUCKET WITH GRAPPLE – SKID STEER & TRACTOR LOADER

SKID STEER	EURO TACH			APPROX.WT/LB	LIST PRICE
ITEM #	ITEM #	MFG. #	DESCRIPTION		
146631	146641	60GRB	60" Rock Bucket – flat bottom and grapple		\$
146632	146642	66GRB	66" Rock Bucket – flat bottom and grapple		\$
146633	146643	72GRB	72" Rock Bucket – flat bottom and grapple		\$
146634	146636	78GRB	78" Rock Bucket – flat bottom and grapple	640	\$
146635	146644	84GRB	84" Rock Bucket – flat bottom and grapple		\$



ROOT GRAPPLE - ECONO

THE ROOT GRAPPLE rakes away debris in a single pass.
The round bottom bar is the necessary tool for back fill.
Separates dirt from logs, brush, rock, or demolition debris.
Tines curve upward to avoid damaging topsoil or utility cables
Up to 25 HP only

SKID STEER	EURO TACH			APPROX.WT/LB	LIST PRICE
ITEM #	ITEM #	MFG. #	DESCRIPTION		
146686	146687		66" Root Grapple – Econo	450	\$



ROOT GRAPPLE - STANDARD SKID STEER & TRACTOR LOADER

Industrial strength grapple for everyday use.
1/2" steel plate (60,000 psi) Oversized points and bushings
Hydraulic cylinders are 2" bore and 10" stroke
Opens to 38". Inside depth 34.5"

SKID STEER	EURO TACH			APPROX.WT/LB	LIST PRICE
ITEM #	ITEM #	MFG. #	DESCRIPTION		
146651	146673	60WARG	60" Root Grapple - standard	705	\$
146652	146674	66WARG	66" Root Grapple - standard	750	\$
146653	146668	72WARG	72" Root Grapple - standard		\$
146654	146669	78WARG	78" Root Grapple - standard	810	\$
146655	146672	84WARG	84" Root Grapple - standard		\$



FOUR-IN-ONE BUCKETS – SKID STEER

This versatile attachment is ideal for
dumping, loading, levelling, grappling, and dozing
Constructed with: Heavy duty cutting edge (1/2" x 6")
1/4" extra strength reinforced steel floor.



SPECIFICATIONS:

HYDRAULIC CYLINDERS	Bore 2.5"	Stroke 8"	Pins 1.25"
BUCKET	Hinge Pins 1.5"	Front Cutting Edge .5" x 6"	Opening 24"
	Reinforce floor .25"	Back Cutting Edge .5" x 4"	Tubing 4" x 4" x .25"

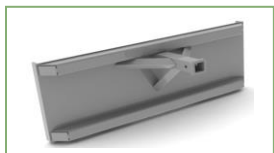
SKID STEER	EURO TACH			APPROX.WT/LB	LIST PRICE
ITEM #	ITEM #	MFG. #	DESCRIPTION		
144482	144487	72WA4n1	72" Four-in-one Bucket	715	\$
144483	144488	78WA4n1	78" Four-in-one Bucket	760	\$
144484	144489	84WA4n1	84" Four-in-one Bucket	798	\$

TOOTH BAR Use for digging and grading

Designed to fit all skid steer loader bucket attachments.
The tooth bars are bolted onto the side of skid steer bucket attachment.
Cutting edges measure 3/8" x 4". Teeth dimensions are 2-1/4" x 5"
Each tooth is made of industrial strength hardened steel.
They are pinned onto a shank and are welded to the cutting edge.
Tooth bars are custom made to fit your skid steer bucket.

JANUARY 1, 2020

ITEM #	G. #	DESCRIPTION	APPROX.WT/LB	LIST PRICE
14	TB5T	60" Tooth Bar		\$
14	TB5.5T	66" Tooth Bar		\$
14	TB6T	72" Tooth Bar		\$
14	TB6.5T	78" Tooth Bar		\$
14	TB7T	84" Tooth Bar		\$

**SKID STEER
HITCH ADAPTER - REESE**

A well constructed attachment
Ideal for trailer spotting

ITEM #	MFG. #	DESCRIPTION	APPROX.WT/LB	LIST PRICE
143155	RHWAUN	Hitch Adaptor - Reese		\$

**ADAPTOR PLATE
SKID STEER to 3PH**

ITEM #	MFG. #	DESCRIPTION	APPROX.WT/LB	LIST PRICE
143156		Adaptor Plate Skid steer to 3PH		\$
143157		Adaptor Plate 3PH to Skid Steer		\$

**STUMP BUCKET / ROCK DIGGER - HD**

12" Cutting width, manufactured with 1/2" steel
Fits Universal skid steer attachment



SKID STEER				
ITEM #	MFG. #	DESCRIPTION	APPROX.WT/LB	LIST PRICE
144435	WASB			\$