

Art's Way
Since 1956

CATTLE MAXX

Portable Rollermill

Model 6105/ 6140/ 7165



www.artsway.com

Consistent.

The CATTLE MAXX line up provides rolled feed in a quality and consistent ration mix. Rollers crack the outside hull to allow digestive juices to penetrate more rapidly.

Efficient Feeding

Maximumized augers provide smooth flow from feeding and transitioning to discharge.

Supplement Hopper

Rear mounted concentrate hopper with built-in sack cutter for easier access.

Feed Protection

Powerful throat magnets are mounted in the hopper side and help minimize roll damage from tramp metal.

Easy Maintenance

Clean out doors, regroovable rollers, greasable bearings make the CATTLE MAXX a breeze to maintain.

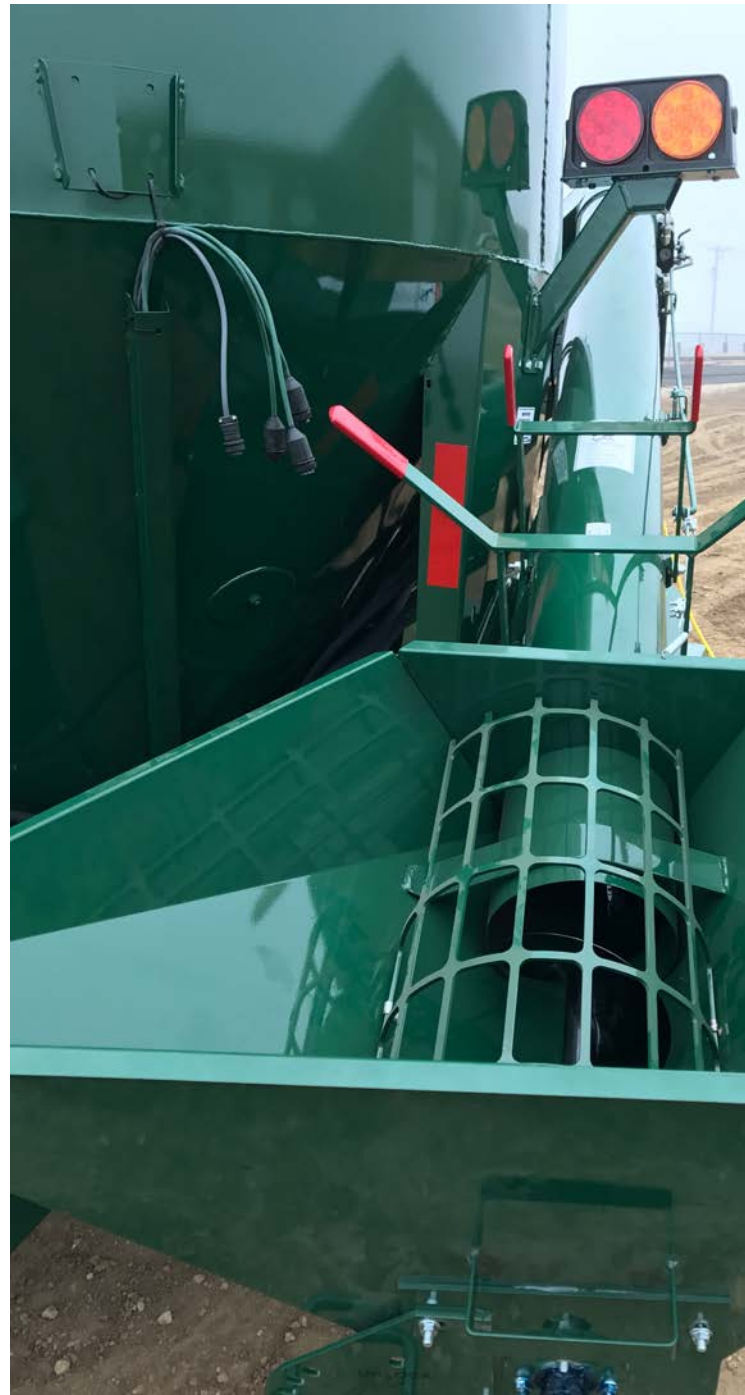
Roller Adjustment

Change roll settings quickly for different particle sizes or ingredients. Utilizing an eccentric on each side stabilizes the rollers eliminates the risk of unwanted larger particles moving through the rollers.

Safety Features

Safety lights are positioned for superior visibility while transporting your CATTLE MAXX. The ladder provides safe access to the mixing tank. A jack stand provides stable placement.

The 7165 features a hydraulic cooler that engages automatically when oil temperatures raise above necessary levels. >







The Right Mixing Tank for Your Job.

Three mixing tank sizes provide the right equipment options for your yard. The 6105 combines a 105 bushel tank with a 20" rollermill. Our "just right" size features a 140 bushel tank paired with a 20" rollermill. The 7165 CattleMaxx provides the largest 165 bushel capacity tank with an impressive 30" rollermill.



Heavy Duty 10" Diameter Rollers

Choose your rollers based on application (See Options).

1:1 same ratio speed available for proper crimping/cracking.

1:1.12 roll speed differential available for higher capacity, high moisture, and smaller micron size.



Centralized Hydraulics

Easier adjustment with central hydraulic bank with easy to read pressure gauges for better monitoring.

Control Options

Hydraulically operated systems allow you to run auger movement from a control box or a wirelessly operated remote. *Mechanical option available on the 6105.



Clean rolling

Standard roll scrapers keep your rolls free of wet and sticky material increasing capacity.

Fast Unload

Maximized auger sizing to match your tank size.
*See options for extensions.

Product Specifications

| | CATTLE MAXX 6105 | CATTLE MAXX 6140 | CATTLE MAX 7165 |
|--------------------------------|---------------------------|---------------------------|---------------------------|
| Tank Capacity | 105 bushel (130.7 cu ft.) | 140 bushel (173.2 cu ft.) | 165 bushel (205.3 cu ft.) |
| P.T.O. Drive | 540 RPM | | |
| Horse Power Requirement | 40-100 HP | 40-100 HP | 50-120 HP |

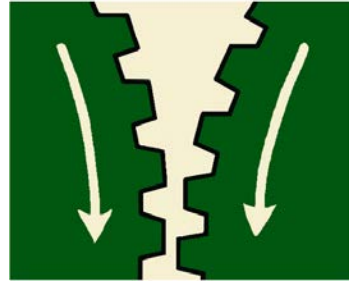
| | | | |
|--------------------------------------|---|-------------------|----------------------------------|
| Feeder | Gravity Hopper or Auger Feeder | | |
| Auger Feeder Length | 96 inches | | |
| Auger Feeder Auger Diameter | 10 inches | | |
| Auger Feeder Type | Mechanical or Hydraulic | Hydraulic | Hydraulic |
| Rollermill width | 20 inch | 20 inch | 30 inch |
| Diameter of Mixing Auger | 12 inch flighting/ 13 inch tube/ 24 inch base | | |
| Discharge Auger Tube Diameter | 8 inch | 8 inch | 10 inch |
| Discharge Auger Type | Mechanical or Hydraulic | Hydraulic | Hydraulic |
| Tires | 10 x 15 8 ply rib implement | 13.5 x 16.1 8 ply | 13.5 x 16.1 8 ply high flotation |
| Supplement Hopper | 21 x 24 inch | | |

| Shipping Dimensions | | | |
|---|-------------|-------------|-------------|
| Overall Height | 106 inches | 112 inches | 126 inches |
| Overall Width with Auger Feeder | 95 inches | 110 inches | 114 inches |
| Overall Length | 170 inches | 170 inches | 175 inches |
| Approx. Weight with Auger Feeder | 3540 pounds | 4500 pounds | 5200 pounds |
| Ground Clearance | 10 inches | 10 inches | 13 inches |

Product Options

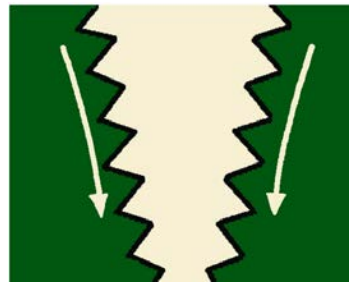
Roller Options with Micron Estimates

| | | |
|-----------------------------|----------------------------------|---------------------------------|
| •5 Groove/Inch Flat | Dry/Hi Moisture Corn | Just Cracked |
| •7 Groove/Inch Flat | Barley/Wheat/Hi Moisture Corn | Medium Grind (1200-1600 micron) |
| •10 Groove/Inch Flat | Oats/Milo/Barley/Wheat/Fine Corn | Medium Grind (1000-1400 micron) |



Flat groove design wears better and creates less dust. Primarily used for cracking, crimping, or flaking grain.

| | | |
|------------------------------|----------------------------------|--|
| •5 Groove/Inch Sharp | Barley/Dry Corn/Hi Moisture Corn | Coarse w or w/o differential (1500-2500 micron) |
| •7 Groove/Inch Sharp | Barley/Wheat/Dry Corn | Medium Grind (1000-1500 micron) |
| •10 Groove/Inch Sharp | Oats/Milo/Barley/Wheat/Fine Corn | Medium Grind w/o (1100-1400 micron) Fine Grind w diff. (800-900 micron) |



Sharp tooth design offers higher capacity and is fit for grinding powder processing.

Scale Indicator Options



Model: Weigh Tronix 640/640XL

Simple Gross/Tar/Net weight indicator with adjustable back lighting, selectable weight filtering, 100 memory channels with individual statistics.



Model: Weigh Tronix 1040/1040XL

Programmable weight indicator with 8 digit LCD display, 100 recipe memory with ingredients, completed batch records, alarm light and external alarm output. All setup is completed with the keypad and display.

Bolt On and Folding Auger Extension Details

| Unloading Auger Configuration | Tube & Elbow Combined Length (10 ft./12 ft.) | Discharge at 46° High Angle Vertical Height (10 ft./12 ft.) | Discharge at 60° High Angle Vertical Height (10 ft./12 ft.) |
|---|--|---|---|
| Standard 10 ft. Or 12 ft. Long Discharge Tube - No Extensions | 11 ft. 5 in./13 ft. 5 in. | 16 ft. 10 in./18 ft. 3 in. | 18 ft. 6 in./20 ft. 3 in. |
| 3 ft. Auger Extensions | 14 ft. 5 in./16 ft. 5 in. | 19 ft. 0 in./20 ft. 5 in. | 21 ft. 1 in./22 ft. 10 in. |
| 6 ft. Auger Extension | 17 ft. 5 in./19 ft. 5 in. | 21 ft. 2 in./22 ft. 7 in. | 23 ft. 8 in./25 ft. 5 in. |

CATTLE MAXX

Portable RollerMill

Model 6105/ 6140/ 7165



Art's Way Manufacturing Co. Inc. reserves the right to change design or specifications without notice. Information contained herein is general and is not intended for specific application purposes. Photographs contained herein may be displayed with safety shields and/or guards removed to show mechanical functions only. AW-GMHM0317

(712) 864-3131
www.artsway.com