

BE AGRI AG & INDUSTRIAL EASE



OWNERS MANUAL

BE-LS25TLE5GC

ASSEMBLY & OPERATING INSTRUCTIONS

Purchase Date _____

Model NO. _____

Serial NO. _____

Dealer _____

To The Owner

Thank you for purchasing an AGRIEASE Log Splitter. It was carefully engineered to provide excellent performance when properly operated and maintained.

Please read this entire manual prior to operating the equipment. It instructs you how to safely and easily set up, operate and maintain your machine. Please be sure that you, and any other persons who will operate the machine, carefully follow the recommended safety practices at all times. Failure to do so could result in personal injury or property damage.

All information in this manual is relative to the most recent product information available at the time of printing. Review this manual frequently to familiarize yourself with the machine, its features and operation. Please be aware that this Operator's Manual may cover a range of product specifications for various models. Characteristics and features discussed and/or illustrated in this manual may not be applicable to all models. We reserve the right to change product specifications, designs and equipment without notice and without incurring obligation.

If applicable, the power testing information used to establish the power rating of the engine equipped on this machine can be found at the engine manufacturer's manual or website.

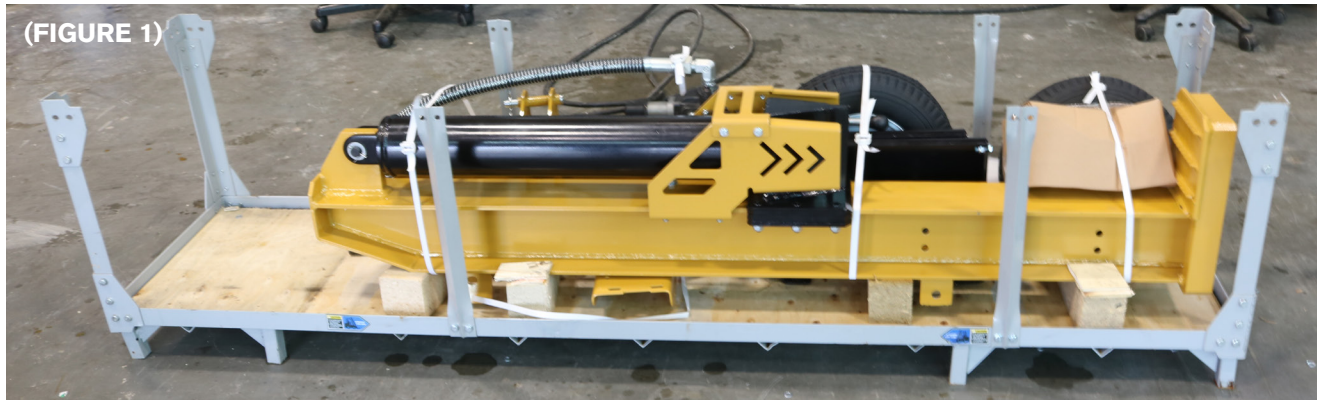
Throughout this manual, all references to right and left side of the machine are observed from the operating position. The engine manufacturer is responsible for all engine-related issues with regards to performance, power-rating, specifications, warranty and service. Please refer to the engine manufacturer's Owner's/Operator's Manual, packed separately with your machine, for more information.

ASSEMBLY AND SET-UP INSTRUCTIONS

UNPACKING THE CONTAINER

! **WARNING!** Use extreme caution unpacking this machine. Some components are very heavy and will require additional people or mechanical handling equipment.

Step 1: Use a wrench to remove all the bolts and washers securing the side frames on the metal crate, put aside the side frames and hardware removed, and lift away the crate top and the cardboard box. See FIGURE 1.



Step 2: Remove all loose parts included in the container, e.g. hardware box.

Step 3: Cut and remove the straps securing the parts to the beam or tank assembly, including, wheels, log tray assemblies, etc. then put aside these parts for assembly.

NOTE: DO NOT remove the strap securing the hydraulic hoses assemblies to the beam at this time, until you do the assembly procedure of the hoses.

Step 4: Cut and remove the straps securing the engine / pump assembly to the crate bottom, and then place aside carefully for assembly.

Step 5: Use a pry bar or claw hammer to remove the plywood splinters securing the beam and tank assemblies on the crate bottom. Take out the two heavy assemblies.

NOTE: Due to the weight / size of the two assemblies, it's recommended two or more adults to assist lifting and moving the two assemblies. Lifting tools as hoist, crane, jack, etc. are also recommended.

Step 6: Inspect all component assemblies, parts and accessories according to the packing list attached in this manual. Make sure all items listed in the packing list are included, and of no shipping damage.

NOTE: DO NOT discard the packing materials until you have carefully inspected and satisfactorily operated the tool.

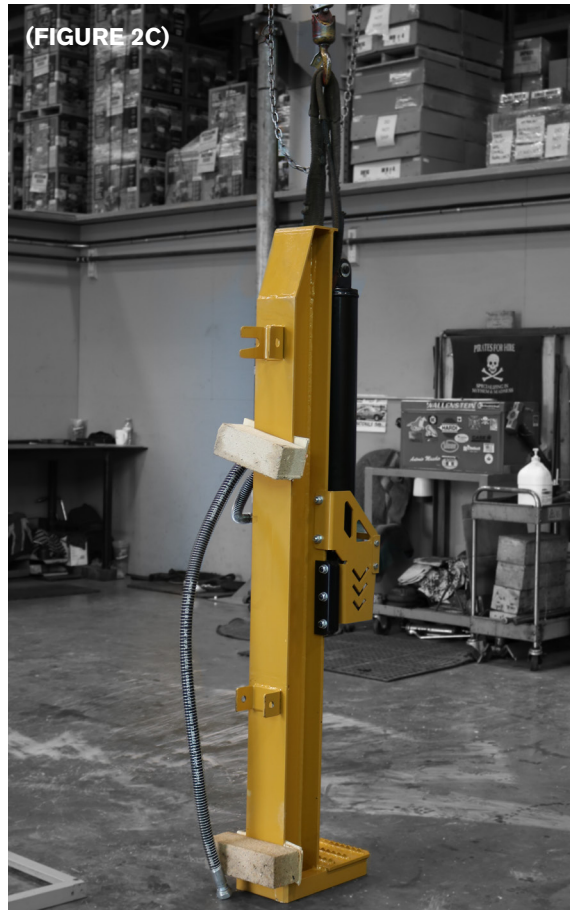
Recommended Method of removing the main assembly

Step 1: Place a strap underneath the black cylinder and attach the loops to the lift hook. See FIGURE 2A.

Step 2: Carefully lift the splitter 90 degrees and swing away from the crate. See FIGURE 2B.

Step 3: Gently lower the assembly to the ground and leave attached to the lift. See FIGURE 2C.

Step 4: Remove the wood blocks. Use a hammer if needed.



ASSEMBLY AND SET-UP INSTRUCTIONS

ASSEMBLING

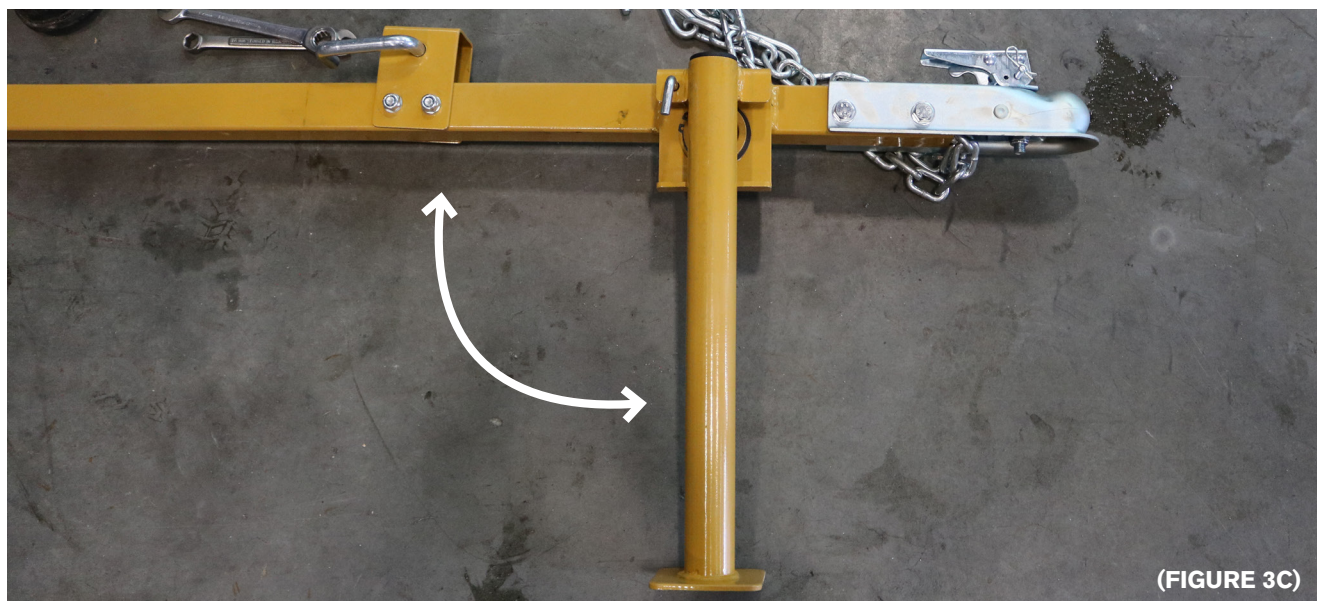
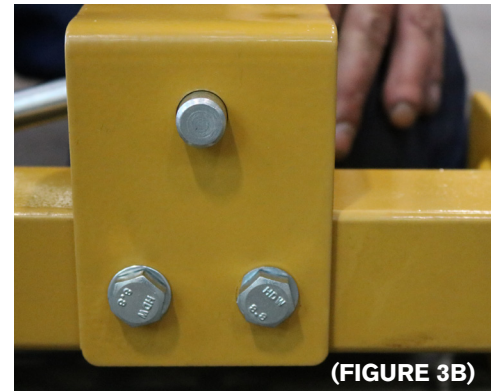
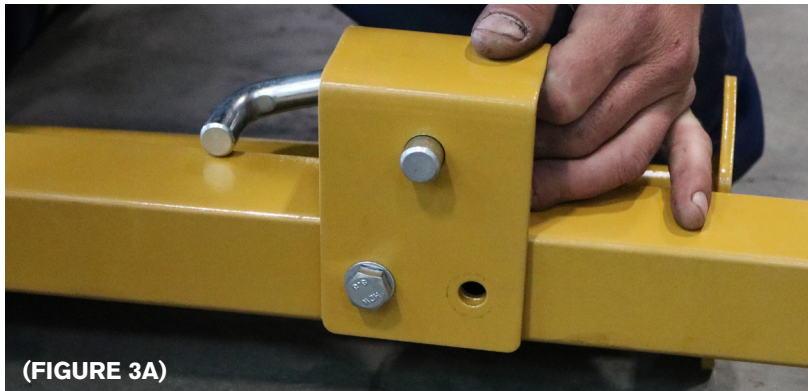
NOTE: Due to the weight / size of the log splitter, it's recommended that two or more adults be present to assist with the assembling. Some lifting tools as hoist, crane, jack, etc. are recommended.

Assembling tools needed:

- | | | |
|------------------|----------------|--|
| 1. 27mm Wrench | 6. 17mm Socket | 11. 500mL 5W-30 Motor Oil |
| 2. 16mm Wrench | 7. 13mm Socket | 12. Rando HD 32 Hydraulic Fluid or equivalent. |
| 3. 13mm Wrench | 8. 7mm Socket | |
| 4. 4mm Allen Key | 9. Pliers | NOTE: Hydraulic oil may be provided with this log splitter. |
| 5. 38mm Socket | 10. Hammer | |

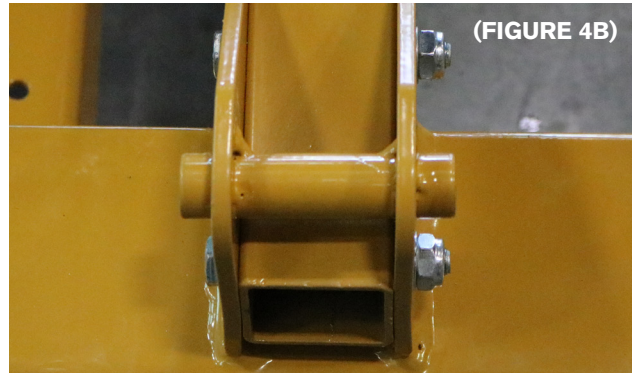
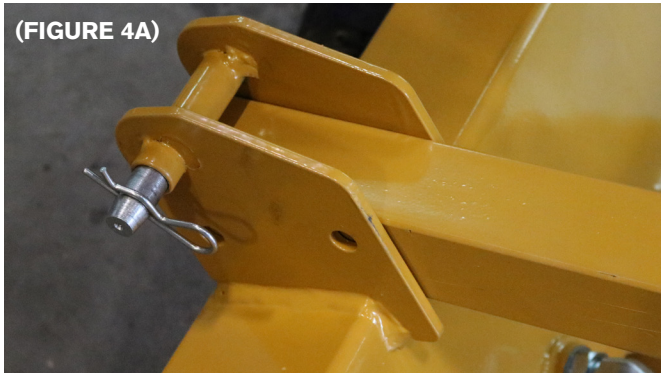
Attaching the tow hitch beam to the tank

1. Attach the yellow rectangular piece to the hitch beam with the handle on the same side as the jack. See FIGURE 3A.
2. Put the bottom two bolts in place and tighten. See FIGURE 3B.
3. Pull the jack out until it is at a 90 degree angle with the tow hitch beam. See FIGURE 3C.



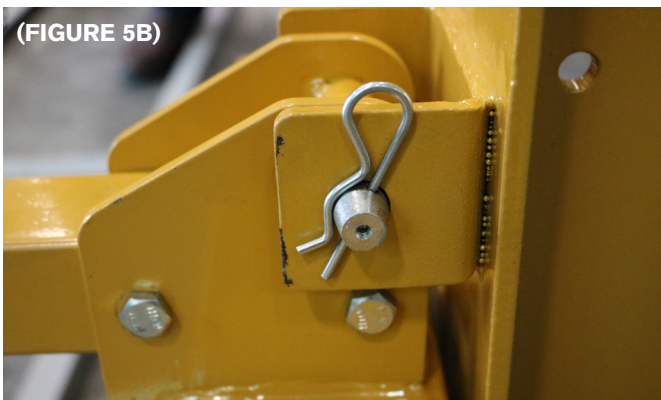
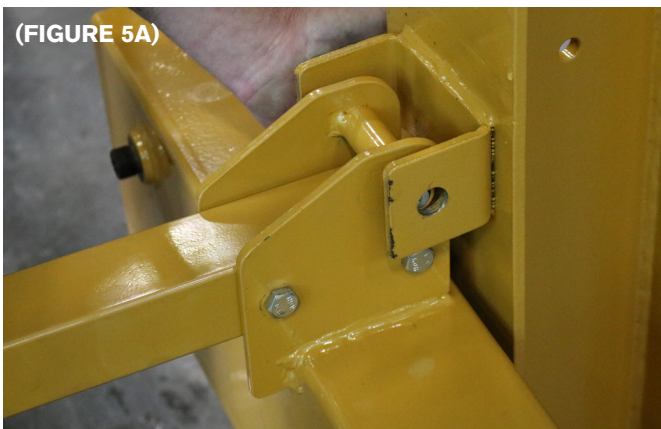
Attaching the tow hitch beam to the tank - Continued

4. Place the end of the hitch beam in the bracket on the tank and secure it with two bolts. See FIGURE 4A.
5. Remove the hair pin and take the hinge pin out. See FIGURE 4B.



Attaching the tank to the main assembly while supporting the main assembly with the strap

6. Line the bracket from from FIGURE 4B up with bracket on the main assembly and secure with the hinge pin and the hair pin from step 5. See FIGURE 5A and FIGURE 5B.
7. Slowly lift the hitch beam and tank assembly 90 degrees. The hitch beam should lock in place. See FIGURE 6.



Attaching the wheel assemblies

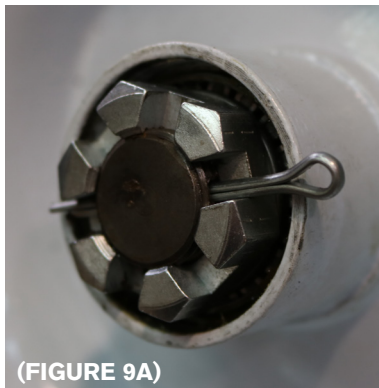
8. Remove the protective cover from the wheel. The bearing will already be installed.
9. Slide the wheel onto the axle. See FIGURE 7.

NOTE: If the wheel doesn't slide onto the axel smoothly, use sandpaper or emery cloth to remove excess paint or small burs from axle assembly.

10. Install the slotted lock nut and use a wrench to tighten. Once tight, slowly loosen the locknut until the wheel spins smoothly. See FIGURE 8.



11. Install the cotter pin into the closest alignment hole and bend the ends inward to secure the wheel.
12. Install the dust cap and use a chisel and hammer to secure it. See FIGURE 10.



13. Repeat steps 8 through 12 for the second wheel.

Attaching the log trays

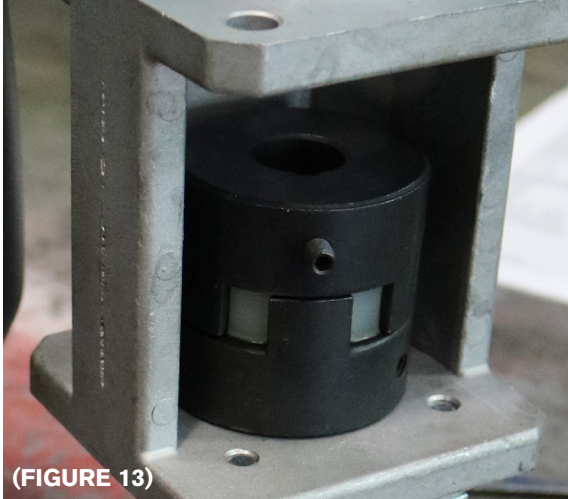
14. Slowly bring the main assembly down 90 degrees until it locks in place with the tow hitch beam.
15. Line up one of the log trays with the bolt holes on the main assembly and put the bolts in place. See FIGURE 11.
16. Hold the tray in place while lining up the second tray and securing the bolts. See FIGURE 12.



Engine and Pump Assembly

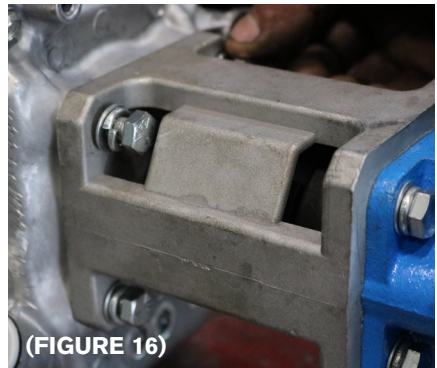
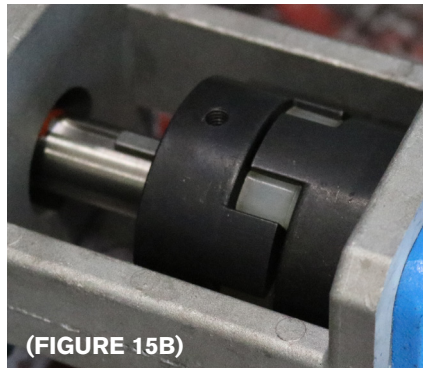
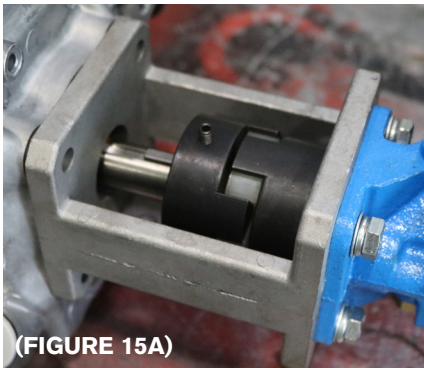
17. Attach the coupler assembly to the hydraulic pump. See FIGURE 13.

18. Ensure the driveshaft on the engine is facing upward and place the rectangular pin in the notch with about 1/4 of the pin hanging over. See FIGURE 14.



19. Ensure the screw on the hydraulic coupler is facing upward and slide the pump onto the driveshaft. Tighten the bolt. See FIGURE 15A and FIGURE 15B.

20. Rotate the hydraulic pump 180 degrees and secure with 4 bolts. See FIGURE 16.



Engine Oil

Oil is a major factor affecting performance and service life. Always change the oil in accordance with the maintenance schedule.

Recommended Oil

Use a 4-stroke motor oil that meets or exceeds the requirements for API service category SJ or later. Always check the API service label on the oil container to ensure it includes the letter SJ or later.

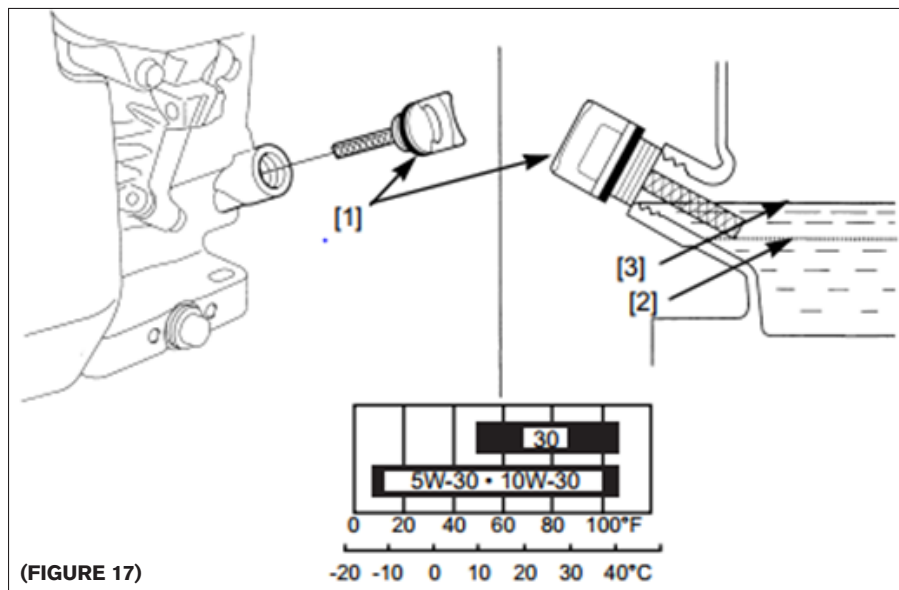
SAE 10W-30 is recommended for general use. Other viscosities show in the chart may be used when the average temperature in your area is within the indicated range. See FIGURE 17.

Oil Level Check and Fill

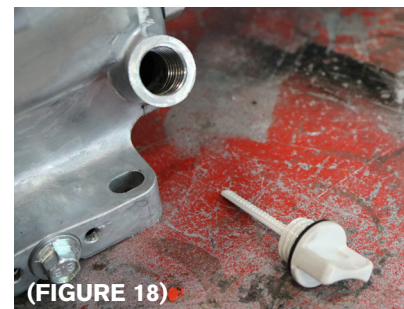
21. Check the oil with the engine stopped and level.
22. Remove the oil filler cap/dipstick [1] and wipe it clean. See FIGURE 17 and FIGURE 18.
23. Insert the oil filler cap/dipstick into the oil filler neck as shown, but do not screw it in, and then remove it to check the oil level.
24. If the oil level is near or below the lower limit mark [2] on the dipstick, fill with the recommended oil to the upper limit mark [3]. Use of funnel suggested. Do not overfill. See FIGURE 17.
25. Reinstall the oil filler cap/dipstick [1].
26. Remove the “no oil in engine” information card once oil is added. See FIGURE 19.

NOTE: Engine does not come with oil.

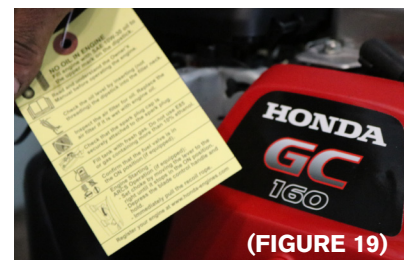
Capacity: 500mL (16.9 oz)



(FIGURE 17)



(FIGURE 18)

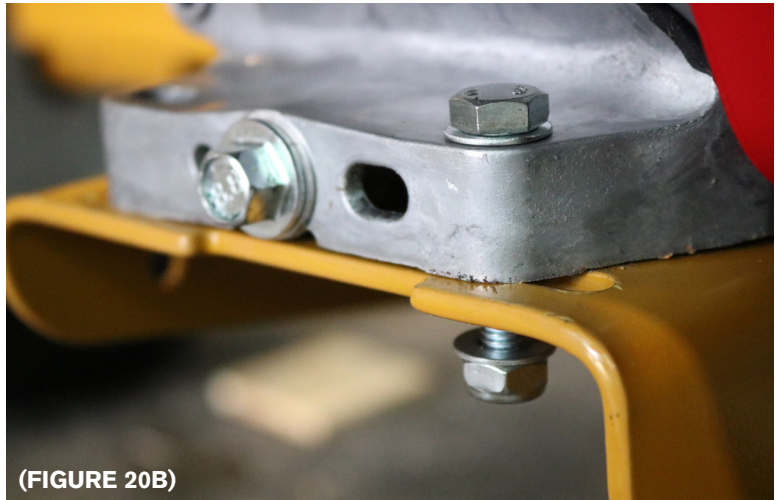


(FIGURE 19)

NOTE: Running the engine with a low oil level can cause engine damage. This type of damage is not covered by the DISTRIBUTORS LIMITED WARRANTY.

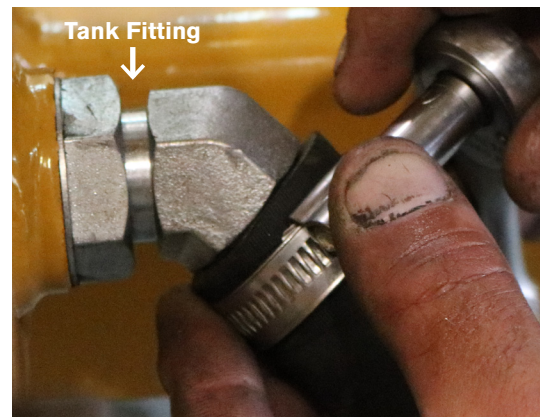
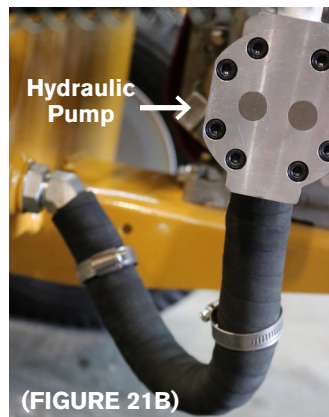
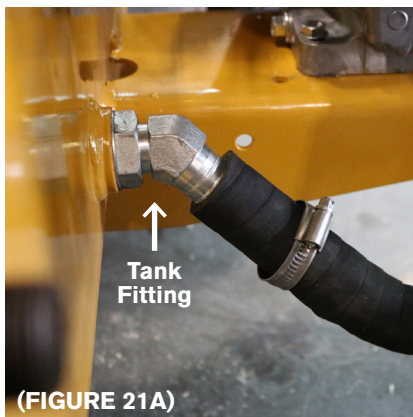
Attaching the engine to the splitter

27. Line the engine up with the bolt pattern on the log splitter frame and secure with 4 bolts. See FIGURE 20A and FIGURE 20B.



Attaching the suction hose

28. Take the plastic wrap off of the suction hose and loosen the hose clamps.
29. Attach one end of the hose to the tank fitting and the other end to the bottom of the hydraulic pump. See FIGURE 21A and FIGURE 21B.
30. Secure with the hose clamps about 1/4" away from the seal. See FIGURE 22.



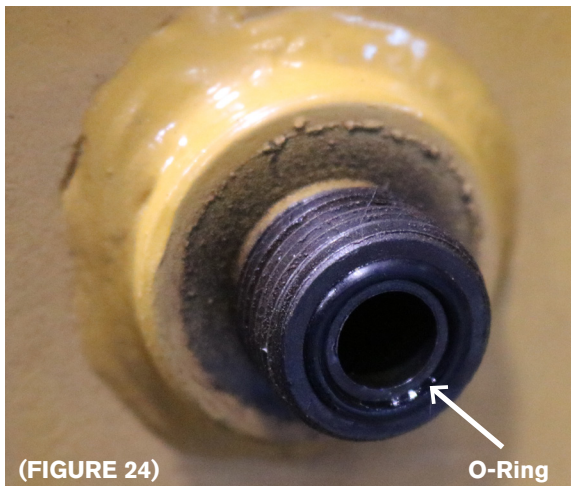
Attaching the hoses

31. Bend the bottom hose into a backwards “S” shape and attach the hose to the top of the hydraulic pump. See FIGURE 23A and FIGURE 23B.



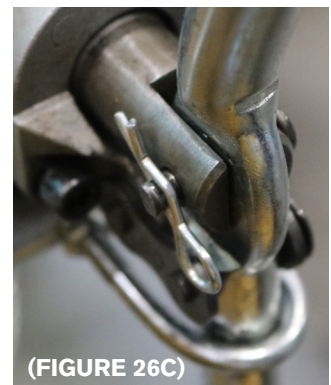
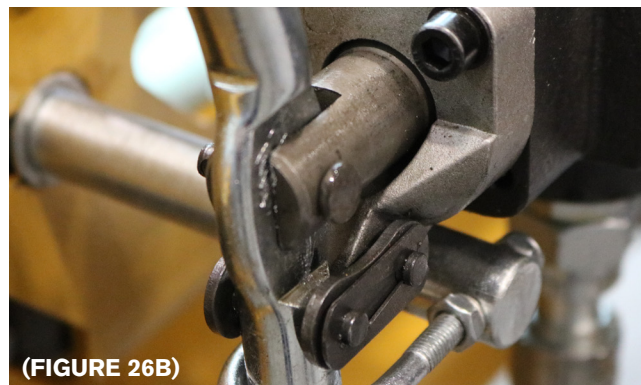
32. Insert an O-Ring into the tank fitting. See FIGURE 24.

33. Attach the top hose to the tank fitting and tighten as needed.



Installing the valve handle

34. Lift the lever and secure with bolt and hair pin. See FIGURE 26A, FIGURE 26B and FIGURE 26C.



BE  **AGRI**
AG & INDUSTRIAL **EASE**